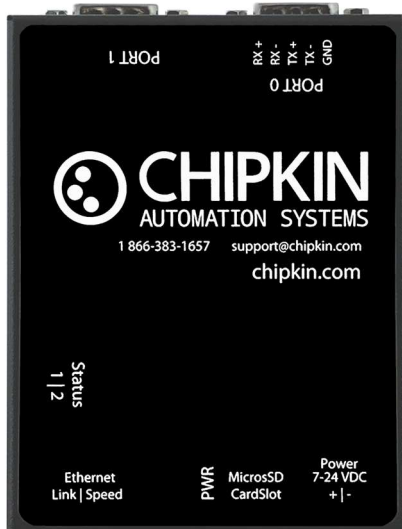


August 31, 2017



## CAS-2700-00

# CAS Gateway Technical Specifications

## PRODUCT DESCRIPTION

Chipkin™ CAS gateway is a multiple protocol gateway that can convert messages and data from one protocol to another. The CAS gateway supports over 100+ industrial protocols including BACnet, Modbus, etc. New protocols are added each month, and custom protocols can be added. The CAS gateway can operate as an active client, passive client, server, passive snoop, push, or pull. The

product design and form factors suitable for industrial extended vibrations and temperature ranges.

The gateway requires minimal configuration and can be considered a 'plug and play' component of any network system. It's ready to operate 'out of the box' and can be installed without an engineer's approval.



**Note:** All gateways sold by Chipkin report operating stats and issues to web pages and maintain logs that can be uploaded by HTTP or ftp.

## SPECIFICATIONS

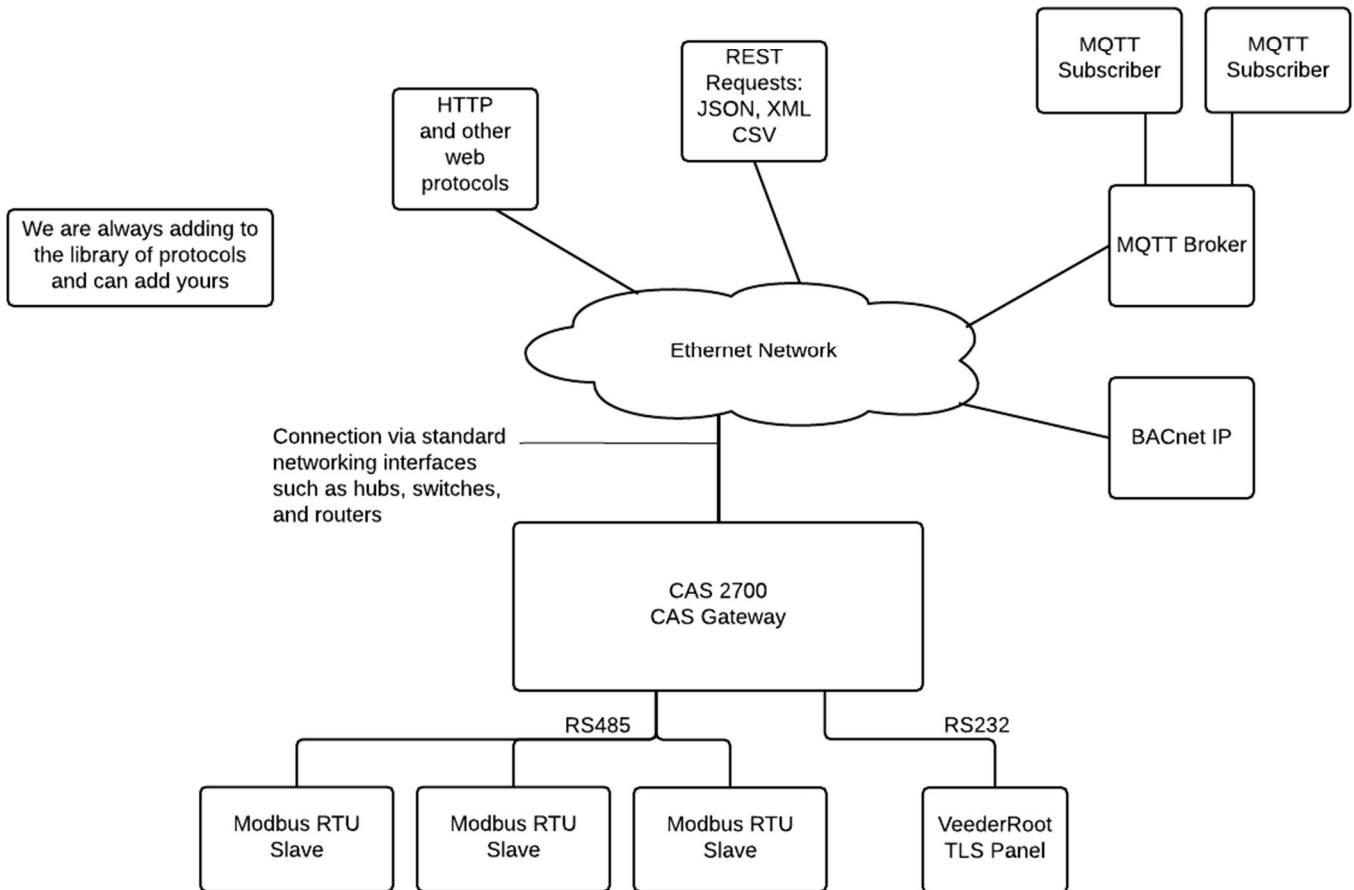
The following specifications are common to all Chipkin gateways.

- UL and ULc approved
- 10/100BASE-T with RJ-45 connector
- 1x RS232 port
- 1x RS485 port (different models have additional ports)
- Power: 7 – 24 VDC through an external power supply
- Gateway Operating temperature: 0 – 70 °C (32 – 158 °F)
- LEDs: link, speed/data, power
- Dimensions (LxWxH): 107 x 83 x 25 mm (4.2 x 3.25 x 1 in.)

## CONNECTION CONFIGURATIONS

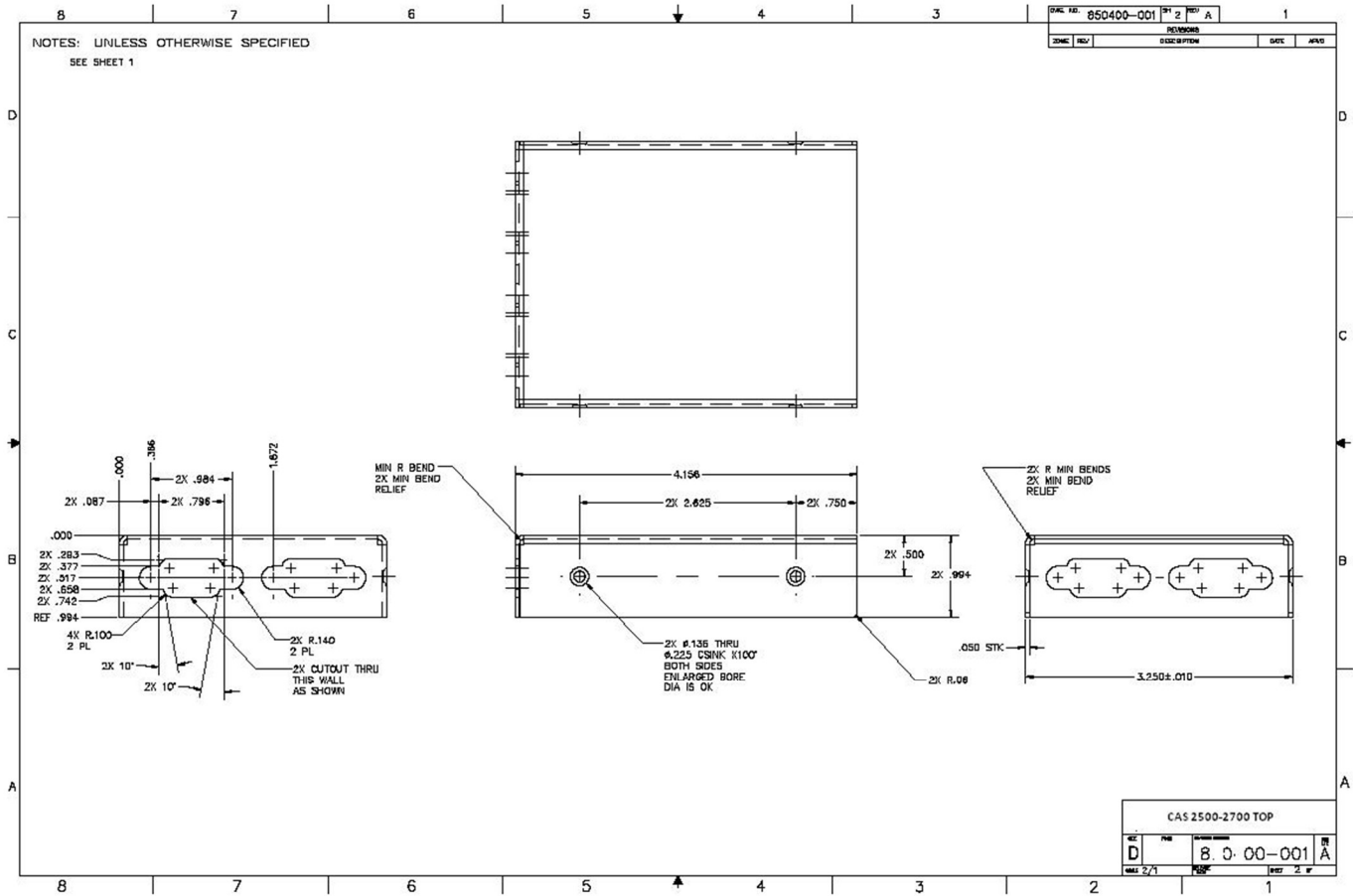
This block diagram lists common network connections. Many other protocols are not mentioned in this block diagram that are also supported.

### CAS 2700 CAS Gateway



## Mechanical drawings

A more detailed version of the mechanical drawings can be provided upon request.



## CUSTOMER SUPPORT

CAS-2700-XX CAS Gateway was developed by Chipkin, and we are proud to provide support for our products. For technical support, sales and customer service, please call us at 1 (866) 383-1657.

## REVISION HISTORY

This table summarizes the update history for this gateway data sheet. Please contact Chipkin by phone or email for an updated version of this document.

DATE	RESP.	DOCUMENT REVISION	COMMENTS
31 Aug 2017	SWS	00	Created.

Thanks for choosing Chipkin's protocol gateways, data clients and integration services to meet your building and industrial automation requirements!

Chipkin™ is a building and industrial automation protocol expert. We develop, configure, install and support gateways (protocol converters), data loggers and remote monitor and controlling applications. Founded in October 2000, Chipkin provides expert solutions for converting BACnet®, Modbus®, and Lonworks®—to name just a few—and enabling interfaces for HVAC, fire, siren, intercom, lighting, transportation and fuel systems. The high-quality products we offer (including those from other vendors) interface with Simplex™, Notifier™, McQuay™, GE™ and many others—so you can rest assured that we will select the most appropriate solution for your application.

With Chipkin you are buying a solution. Our configuration expertise in this field combined with free BACnet and other tools ensure your success; and our customer support via phone, email and remote desktop tools means that we're there when you need us. Chipkin is a small responsive company, and we live or die by the quality of our service—and with offices in two time zones—we can provide support when you need it. Give us a call now!

## **Sales and Customer Service**

**Toll free: 1-866-383-1657**

**Email: [salesgroup1@chipkin.com](mailto:salesgroup1@chipkin.com)**

All contents are Copyright © 2000-2017 Chipkin Automation Systems. All rights reserved.  
This document is Chipkin Public Information.