



FieldServer FS-B35XX Series Start-up Guide



APPLICABILITY & EFFECTIVITY

Provides instructions for the FS-B35XX-05* Model FieldServer.

The instructions are effective for the above as of August 2016.

**Contact FieldServer Technical Support for information on the earlier FS-B35XX-01 Model.*

Document Revision: 1.B

Technical Support

Please call us for any technical support needs related to the FieldServer product.

Sierra Monitor Corporation
1991 Tarob Court
Milpitas, CA 95035

Website: www.sierramonitor.com

U.S. Support Information:

+1 408 262-6611

+1 800 727-4377

Email: support@sierramonitor.com

EMEA Support Information:

+44 2033 1813 41

Email: support.emea@sierramonitor.com

TABLE OF CONTENTS

1	Equipment Setup	5
1.1	Supplied Equipment.....	5
1.2	Mounting	6
1.3	Dimensions	7
1.4	Wiring.....	7
1.5	Specifications.....	8
2	Connection to Device	9
2.1	RS-232 Connection	9
2.2	RS-485 Connection	9
2.3	Ethernet Connection	9
2.3.1	<i>Ethernet Port Behavior (N1 & N2).....</i>	<i>10</i>
3	Operation	11
3.1	Power up the Device.....	11
3.2	Connect the PC to the FieldServer via Ethernet Port.....	11
3.3	Using FieldServer Toolbox to Find the IP Address	11
3.4	Assign Network Settings for the FieldServer	12
4	Configuring the FieldServer	14
4.1	Retrieve the Sample Configuration File.....	14
4.2	Change the Configuration File to Meet the Application	14
4.3	Load the Updated Configuration file	15
4.3.1	<i>Using the Toolbox application to load a configuration file.....</i>	<i>15</i>
4.3.2	<i>Using the FS-GUI to Load a Configuration File</i>	<i>17</i>
4.3.3	<i>Retrieve the Configuration File for Modification or Backup.....</i>	<i>18</i>
4.4	Test and Commission the FieldServer	19
	Appendix A. Troubleshooting.....	20
	Appendix A.1. Communicating with the FieldServer over the Network.....	20
	Appendix A.2. Before Contacting Technical Support take a Diagnostic Capture	20
	Appendix B. LED Functions.....	23
	Appendix B.1. LED Identification and Function	23
	Appendix B.2. LED Interpretation	24
	Appendix B.2.1. <i>LonWorks LED Interpretation.....</i>	<i>24</i>
	Appendix B.3. LED Power up sequence	24
	Appendix C. Supplied Connector Kit (FS-8915-11)	25
	Appendix D. Limited 2 Year Warranty	26

LIST OF FIGURES

Figure 1: FieldServer FS-B35XX Series showing Din Mounting Option	6
Figure 2: FieldServer FS-B35XX Series showing Dimensions	7
Figure 3: Specifications	8
Figure 4: RS-232 Connection Ports	9
Figure 5: RS-435 Connection Ports	9
Figure 6: Ethernet Connection Ports	9
Figure 7: FieldServer Toolbox	11
Figure 8: FieldServer Toolbox Configure Icon	12
Figure 9: Configure Device Window	12
Figure 10: Device Network Settings Window	13
Figure 11: FS-GUI File Transfer	14
Figure 12: FS-GUI Loading Files	17
Figure 13: Retrieve Configuration File	18
Figure 14: FS-GUI Connections	19
Figure 15: FieldServer Connector	25

1 EQUIPMENT SETUP

1.1 Supplied Equipment

FS-B35XX Series FieldServer

- Preloaded with Modbus RTU driver, SMT Ethernet driver and any other drivers ordered. A sample configuration file is also pre-loaded onto the FieldServer.
- All instruction manuals, driver manuals, configuration manuals and support utilities are available on the USB drive provided in the optional accessory kit, or on-line at www.sierramonitor.com/customer-care/resource-center.

USB Flash Drive loaded with:

- FS-B35XX Series Start-up Guide
- FieldServer Configuration Manual
- FieldServer Utilities Manual
- All FieldServer Driver Manuals
- Support Utilities
- Any additional folders related to special files configured for a specific FieldServer
- Additional components as required - see Driver Manual Supplement for details



Accessories:

- DB9F/RJ45 Connection Adapter (Part # FS-8917-02)
- Adapter for hyperterminal connection to the Sys Port (Part # FS8917-26)
- Power Supply (Part # 69196)
- Detachable Power Cord (Part # 53029)
- 7 pin mini connector (RS-485) (Part # 59232)
- 5 pin mini connector (Power) (Part # 59231)
- 2 pin mini connector – High Temp (LonWorks® connection) (Part # 59230)
- Self-Adhesive feet (Part # 69178)
- Small accessory kit containing four unpinned DB9 connectors (Part # 8915-11)

1.2 Mounting

The following mounting options are available:

- Wall or panel.
- Free standing or table.
- DIN rail (Part # FS-8915-30) - not included.

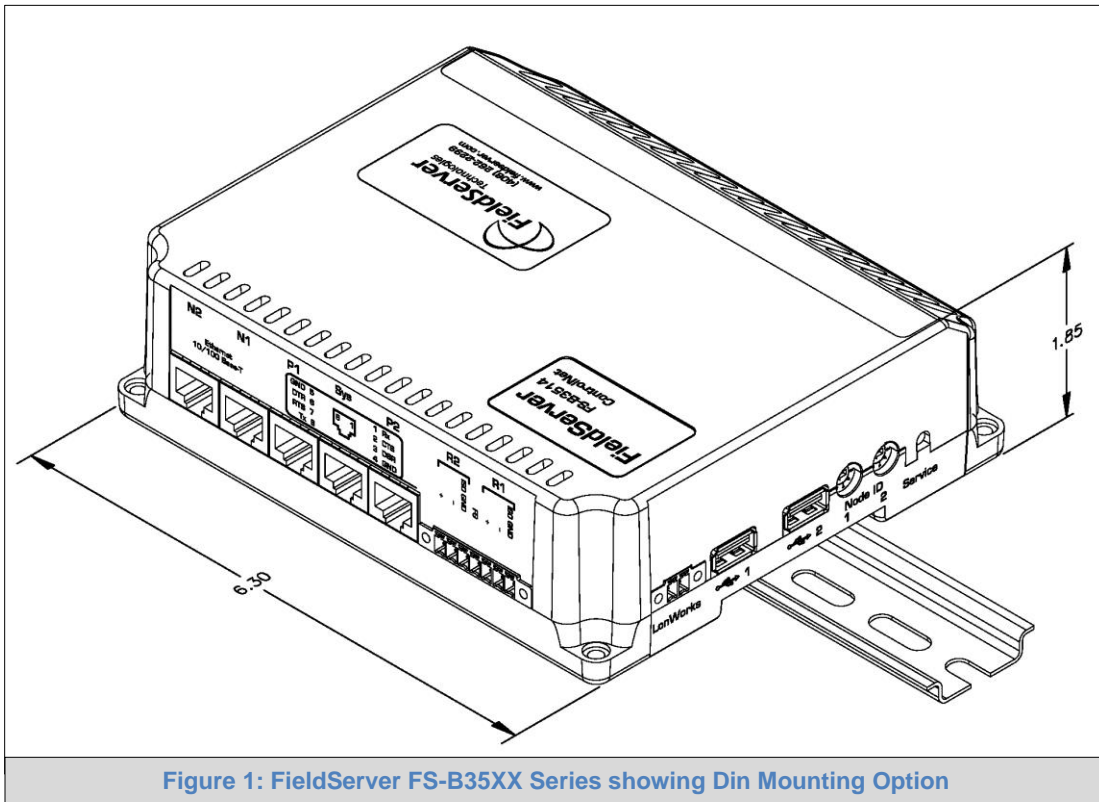


Figure 1: FieldServer FS-B35XX Series showing Din Mounting Option

NOTE: Install only as instructed, failure to follow the installation guidelines or using screws without the DIN Rail Mounting Bracket could result in permanent damage to the product.

NOTE: If the FieldServer is removed from the din rail, use the original screws to reattach. Longer screws will damage the FieldServer.

1.3 Dimensions

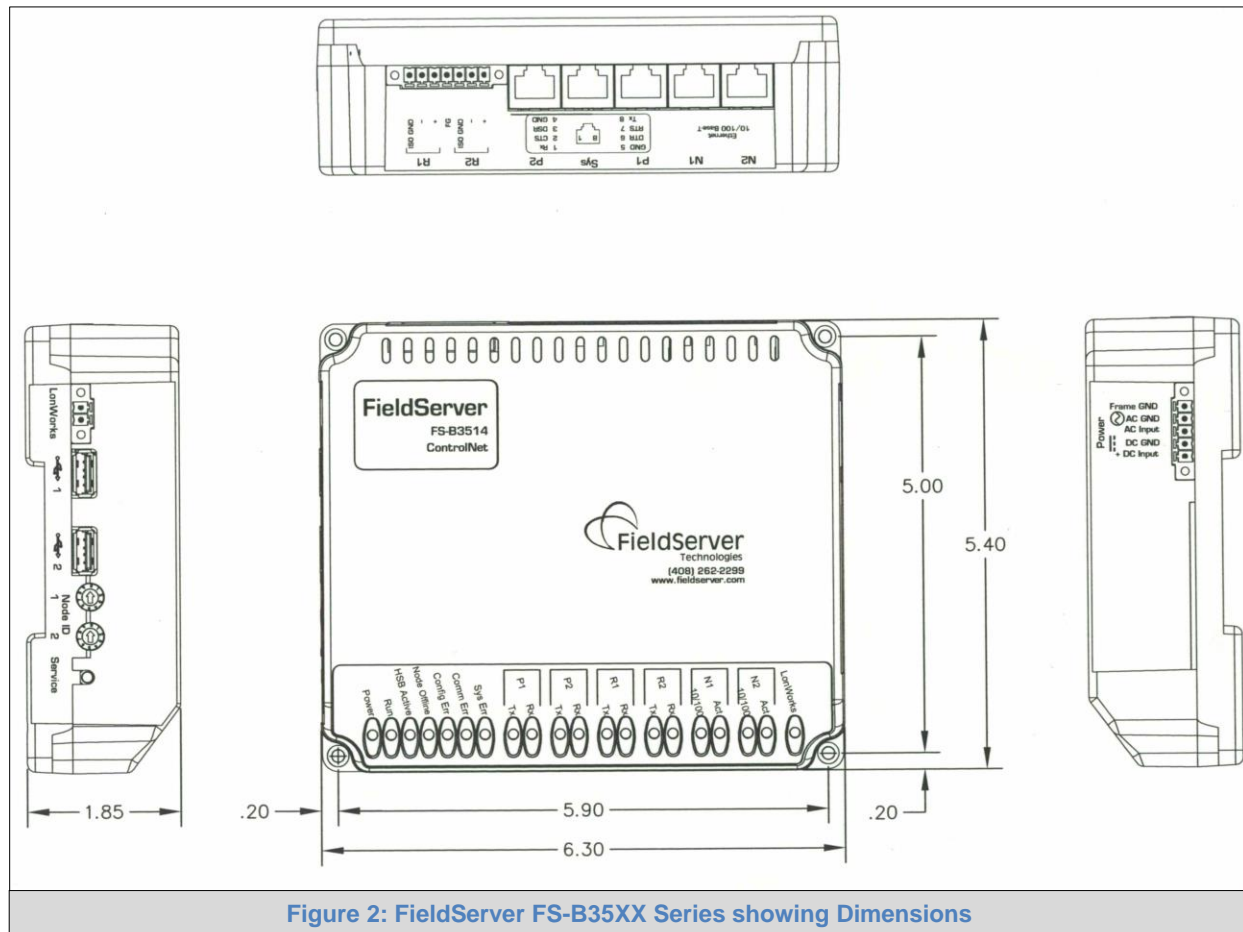


Figure 2: FieldServer FS-B35XX Series showing Dimensions

1.4 Wiring

The power socket is a “screw terminal” type. It is recommended to use of the power supply sent with the unit. If an alternative power supply is desired, select an external power supply that has been certified for safety for the correct destination country and an output rating that is considered acceptable. Refer to **Section 1.5** for detailed specifications.

NOTE: USE COPPER CONDUCTORS ONLY.

1.5 Specifications¹



FS-B35XX Series	
Available Ports	<p>2 x 10/100 BaseT Ethernet connectors (auto sensing) with ESD Protection: N1, N2. Ethernet ports are not networked together.</p> <p>2 x RJ45 RS-232 connectors: P1, P2 – both galvanically isolated with ESD protection.</p> <p>1 x RJ45 RS-232 System port: Sys – For FieldServer diagnostic use only.</p> <p>2 x RS-485 Serial connectors: R1, R2 – both galvanically isolated with ESD protection.</p> <p>1 x LonWorks® connector.</p> <p>Auxiliary Components: 2x USB Host (Type A) connectors which can be used to update the Firmware and Configuration File, Linux Kernel and Flash File system. Node ID selectors and LonWorks® Service button are available for those drivers requiring these features. See appropriate driver manual. For more information refer to Enote0092.</p> <p>Fieldbus: Fieldbus connectors available on selected gateways.</p>
Power Requirements	<p>24 VAC (+/- 10%) and 12-30 VDC, 12W</p> <p>NOTE: USE COPPER CONDUCTORS ONLY</p>
Approvals	CE Marked, CSA Certified: UL916 Standard and CSA @ 22.2, DNP 3.0 Tested, FCC: Part 15, LonMark Certified, Modbus Tested, RoHS Compliant, GOST-R Certified
Power Requirements²	Multi-mode power adapter: 9-30VDC or 12 - 24VAC
Physical Dimensions (WxDxH)³	6.3 W x 5.4 D x 1.95 H inches (16 x 13.7 x 5 cm) ³
Weight³	2.5 lbs. (1.5 Kg)
Operating Temperature	0 – 60°C (32 – 140°F)
Surge Suppression	EN61000-4-2 ESD EN61000-4-3 EMC EN61000-4-4 EFT
Humidity	10 - 90% RH (non-condensing)

Figure 3: Specifications

“This device complies with part 15 of the FCC Rules. Operation is subject to the following two conditions:

- This device may not cause harmful interference
- This device must accept any interference received, including interference that may cause undesired operation.

NOTE: This equipment has been tested and found to comply with the limits for a Class A digital device, pursuant to part 15 of the FCC Rules. These limits are designed to provide reasonable protection against harmful interference when the equipment is operated in a commercial environment. This equipment generates, uses, and can radiate radio frequency energy and, if not installed and used in accordance with the instruction manual, may cause harmful interference to radio communications. Operation of this equipment in a residential area is likely to cause harmful interference in which case the user will be required to correct the interference at his expense. Modifications not expressly approved by FieldServer could void the user's authority to operate the equipment under FCC rules.”

¹ Specifications subject to change without notice.

² Excluding external power supply.

³ Excluding mounting tabs.

2 CONNECTION TO DEVICE

2.1 RS-232 Connection

Connect a RJ-45 cable (A) directly between Port P1/Port P2 and the remote RS-232 device. If using a custom built cable, make sure that the pinout on the FieldServer side of the cable is limited to the use of pins 2(TX), 3(RX) and 5(GND).

NOTE: The Sys Port is for diagnostic use only and should not be used to connect to a Node.

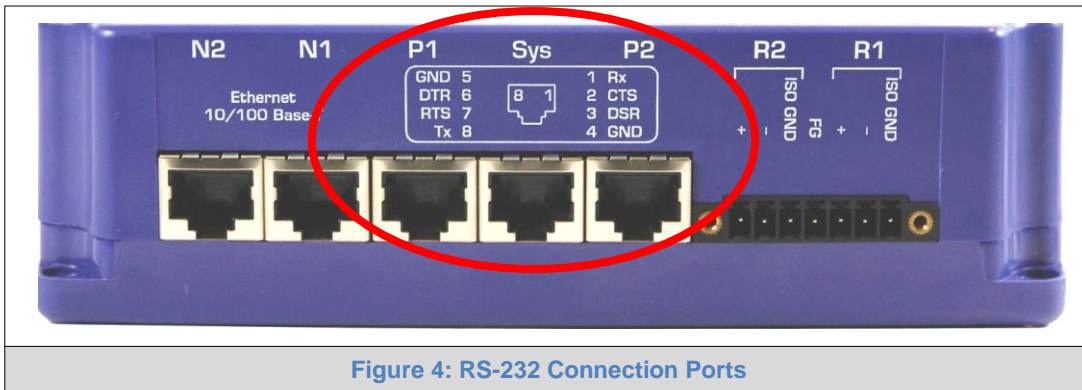


Figure 4: RS-232 Connection Ports

2.2 RS-485 Connection

If using RS-485 from the remote device to the FieldServer, the “+”, “-” and “GND” wire connections can be used on the RS-485 port on the FieldServer.

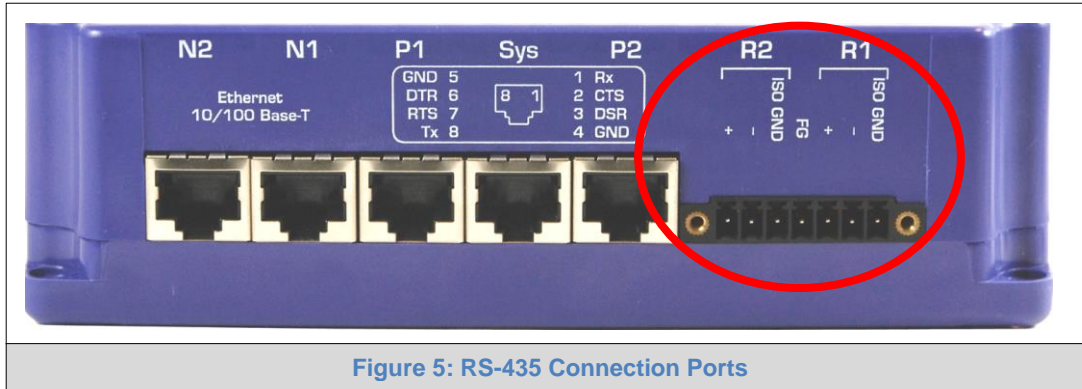


Figure 5: RS-485 Connection Ports

2.3 Ethernet Connection

The Ethernet ports support Auto-MDIX. The provided Cat5 UTP Ethernet cable can be used to connect the FieldServer to a hub/switch or directly to the device through these ports.

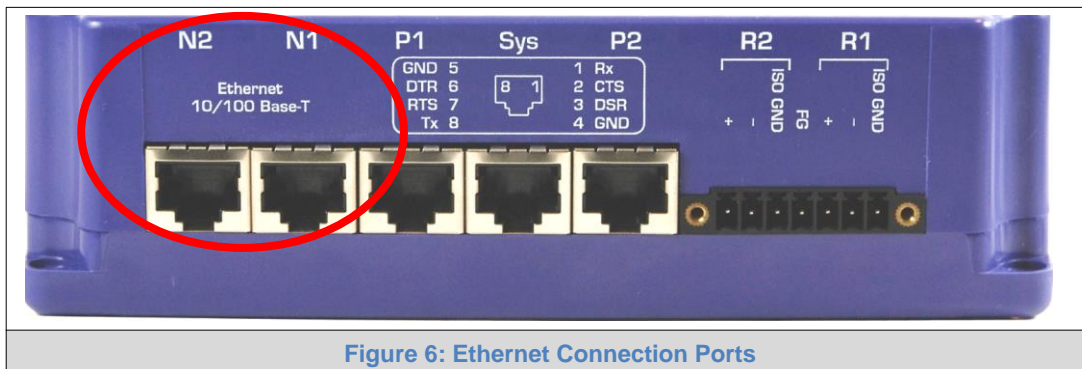


Figure 6: Ethernet Connection Ports

2.3.1 Ethernet Port Behavior (N1 & N2)

The N1 and N2 Ethernet ports share an Ethernet stack. Therefore, the IP addresses of N1 and N2 must be on separate subnets and must be connected to separate networks.

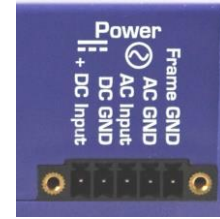
There is only 1 Gateway IP Address in the FS-B35XX. This means that when using both N1 and N2 Ethernet ports simultaneously, only 1 Ethernet port can connect to a larger network through the Gateway IP Address while the other is limited to a local network.

In the configuration file of the FS-B35XX, the choice of N1 or N2 is irrelevant. As a server, the FS-B35XX will accept messages from either N1 or N2 port. As a client, the FS-B35XX will choose the correct port to transmit a message based on the IP address of the remote device.

3 OPERATION

3.1 Power up the Device

- Apply power to the device. Ensure that the power supply used complies with the specifications provided in **Section 1.5**.
- The power light should burn a steady green when the FieldServer is powered up. Refer to **Appendix B** for more information on the various LED functions.



3.2 Connect the PC to the FieldServer via Ethernet Port

- The Ethernet ports support Auto-MDIX. The provided Cat5 UTP Ethernet cable can be used to connect the FieldServer to a hub/switch or directly to the device through either of the N1 or N2 ports.
- It is important that the PC/Laptop is on the same subnet as the FieldServer.
- If connecting 2 FieldServers together using the N1 and N2 ports, the ports need to be on different subnets. The default IP Address on the FieldServer N1 port is 192.168.2.101 and the N2 port is 192.168.3.101. Refer to **Section 2.3.1** and the FieldServer Toolbox Manual.

3.3 Using FieldServer Toolbox to Find the IP Address

- Check that a CAT5 Ethernet cable (straight through or cross-over) is connected between the local PC and FieldServer or the local PC is connected to the same subnet as the FieldServer.
- Check that the FieldServer Toolbox is loaded onto the local PC. If not, download FieldServer-Toolbox.zip on the Sierra Monitor webpage, under Customer Care-Resource Center, Software Downloads:
<http://www.sierramonitor.com/customer-care/resource-center?filters=software-downloads>.
Then extract the executable file and complete the installation.
- Disable firewall and virus protection software if possible.
- Double click on the FS Toolbox Utility.
- Check the FieldServer IP Addresses from the device listings.

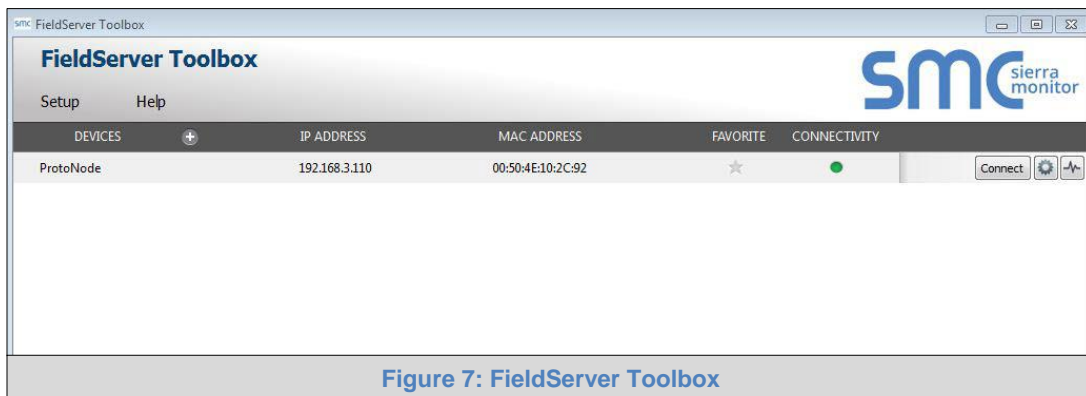


Figure 7: FieldServer Toolbox

- Type the appropriate IP Address into the browser address bar to move onto registering the FieldServer (**Section 3.4**).

3.4 Assign Network Settings for the FieldServer

- Follow the FieldServer Toolbox set up instructions in **Section 3.3** if needed.
- Once the FieldServer Toolbox is open, find the FieldServer that requires network setting review or changes.
- From the Toolbox main page, click on the configure icon (the gear picture).

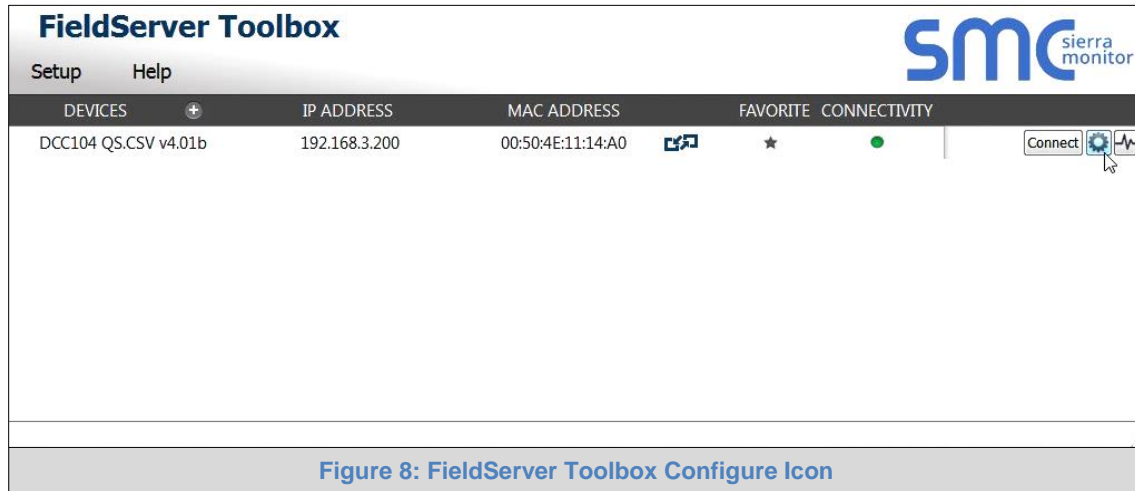


Figure 8: FieldServer Toolbox Configure Icon

- Select Network Settings.

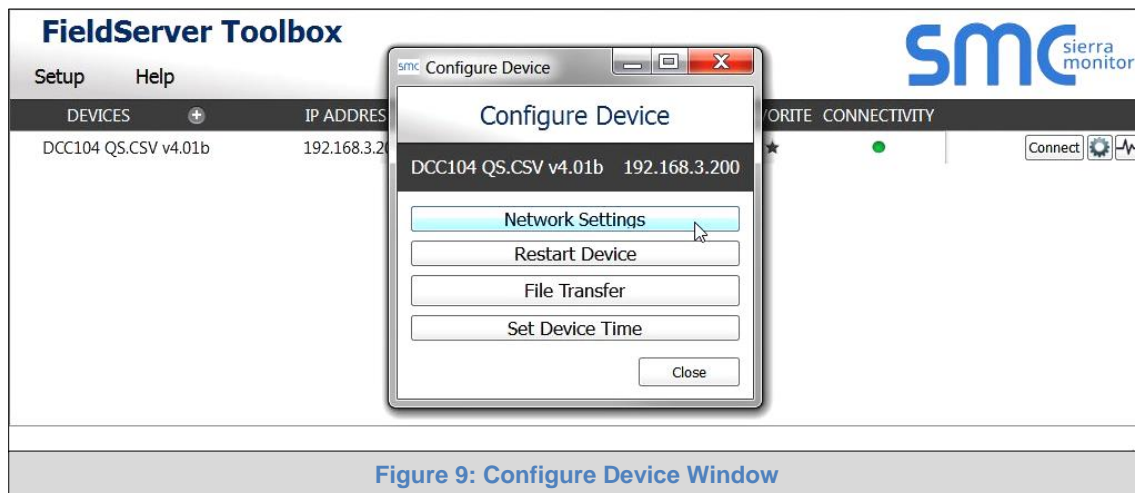


Figure 9: Configure Device Window

- Review or modify the necessary network fields.

NOTE: If the FieldServer is connected to a router, the IP Gateway of the FieldServer should be set to the IP Address of that router.

- The following fields may be review or changed as needed:
 - IP Address (N1 IP Address field)
 - Netmask (N1 Netmask field)
 - DHCP Client State (N1 DHCP Client State field)
 - IP Gateway (Default Gateway field)
 - DNS 1 & 2 (Domain Name Server fields) – **Ensure DNS1 is 8.8.8.8 and DNS2 is 8.8.4.4**

NOTE: Do not change the DHCP Server State (N1 DHCP Server State field).

- Click “Update IP Settings”, then click on “Change and Restart” to restart the FieldServer and activate the new network settings. Note that if the FieldServer was open in a browser, the browser will need to be pointed to the new IP Address to access the FieldServer.

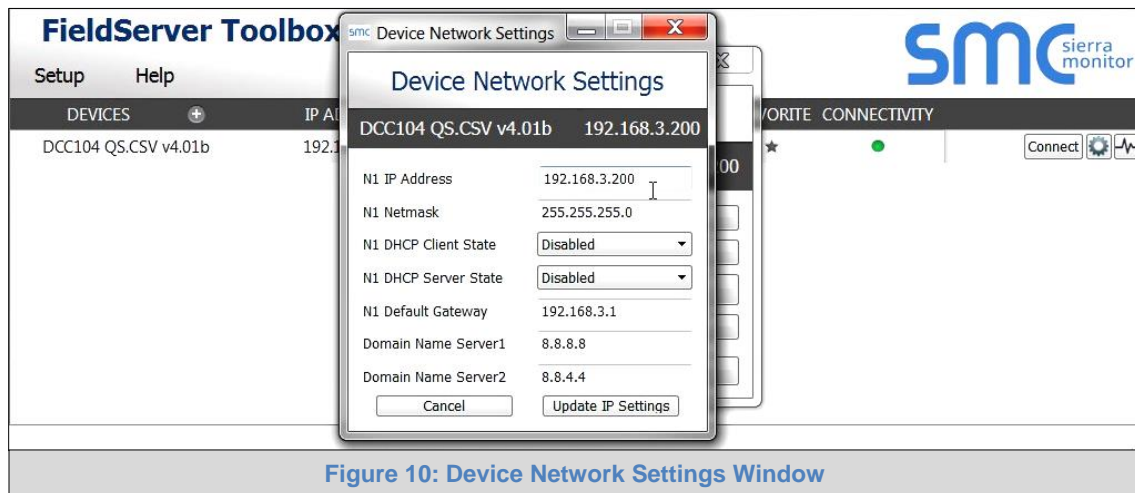


Figure 10: Device Network Settings Window

- Power cycle the FieldServer.

Record the IP Address assigned to the ProtoNode for future reference.

4 CONFIGURING THE FIELD SERVER

4.1 Retrieve the Sample Configuration File

The configuration of the FieldServer is provided to the FieldServer's operating system via a comma-delimited file called "CONFIG.CSV".

If a custom configuration was ordered, the FieldServer will be programmed with the relevant device registers in the Config.csv file for the first time start-up. If not, the product is shipped with a sample config.csv that shows an example of the drivers ordered.

- In the main menu of the FS-GUI screen, go to "Setup", then "File Transfer", and finally "Retrieve".
- Click on "config.csv", and open or save the file.

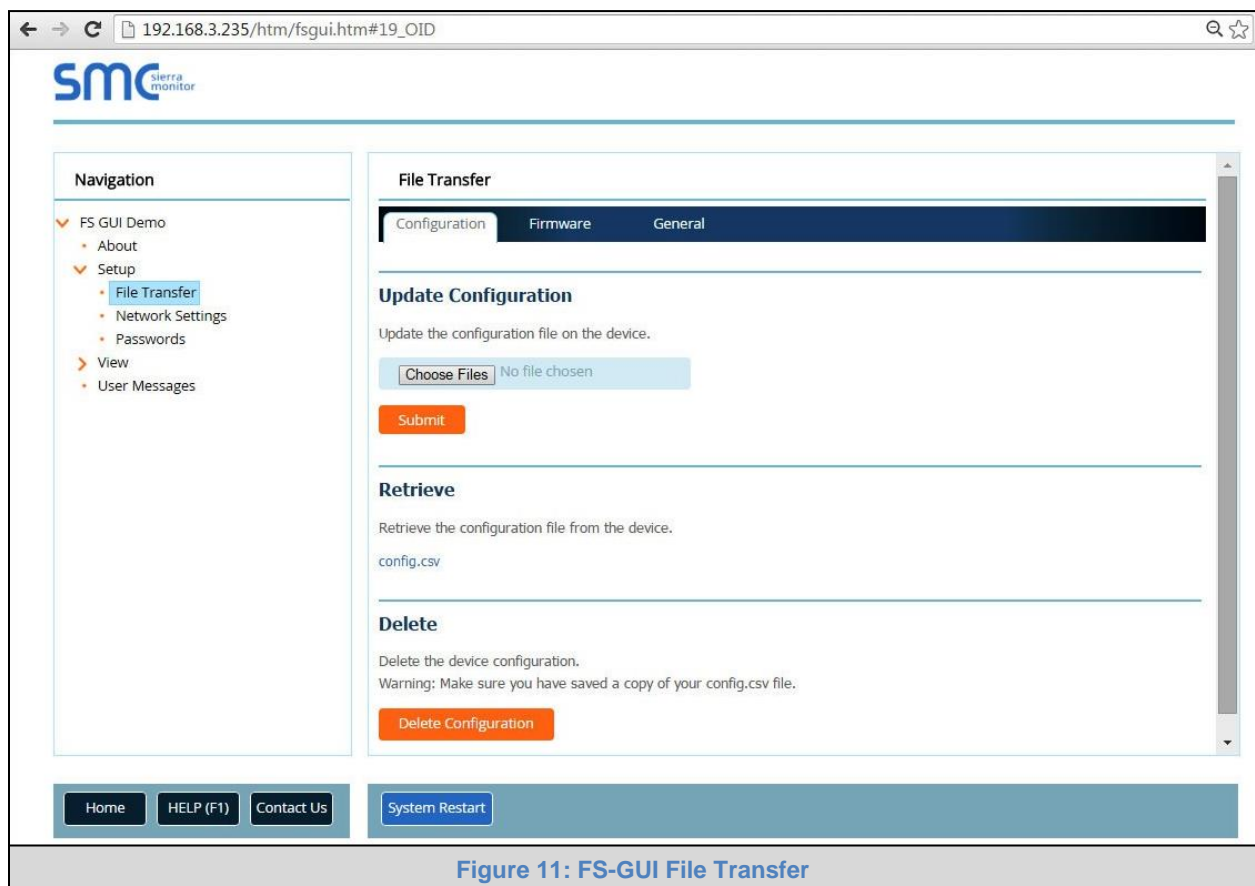


Figure 11: FS-GUI File Transfer

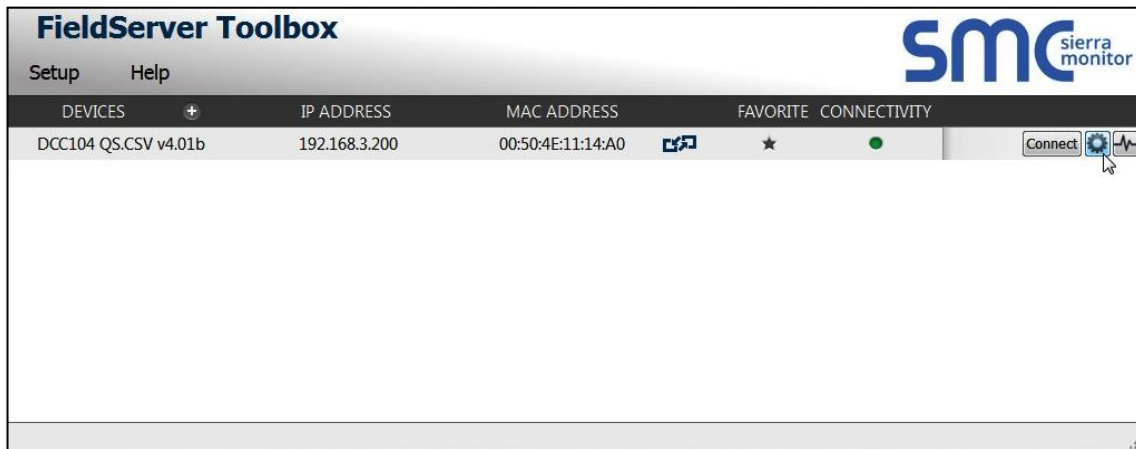
4.2 Change the Configuration File to Meet the Application

Refer to the FieldServer Configuration Manual in conjunction with the Driver supplements for information on configuring the FieldServer.

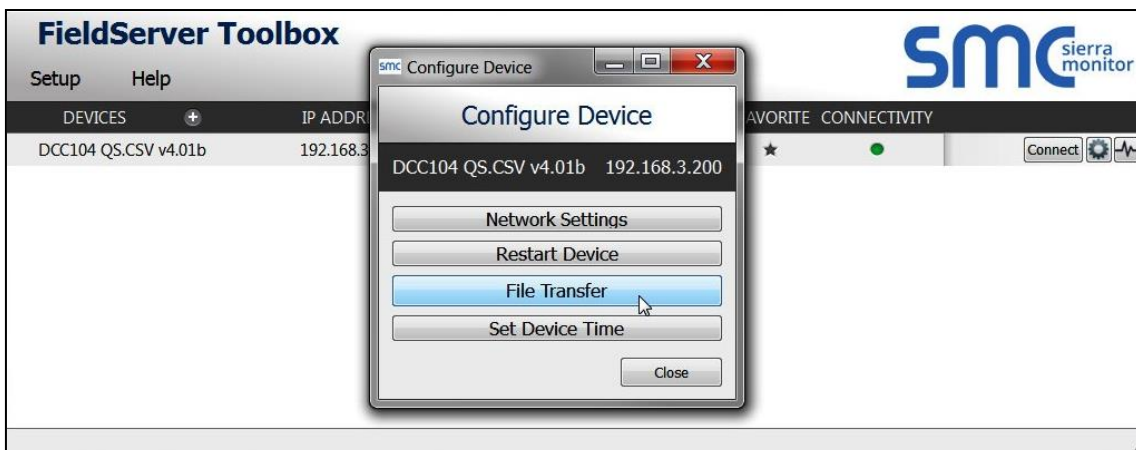
4.3 Load the Updated Configuration file

4.3.1 Using the Toolbox application to load a configuration file

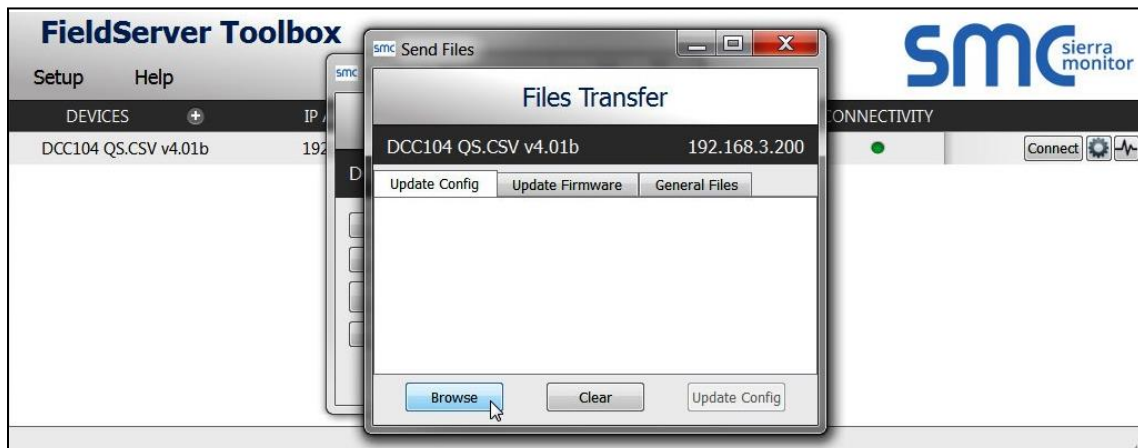
- From the Toolbox main page, click on the setup icon (the gear picture).



- Select File Transfer.



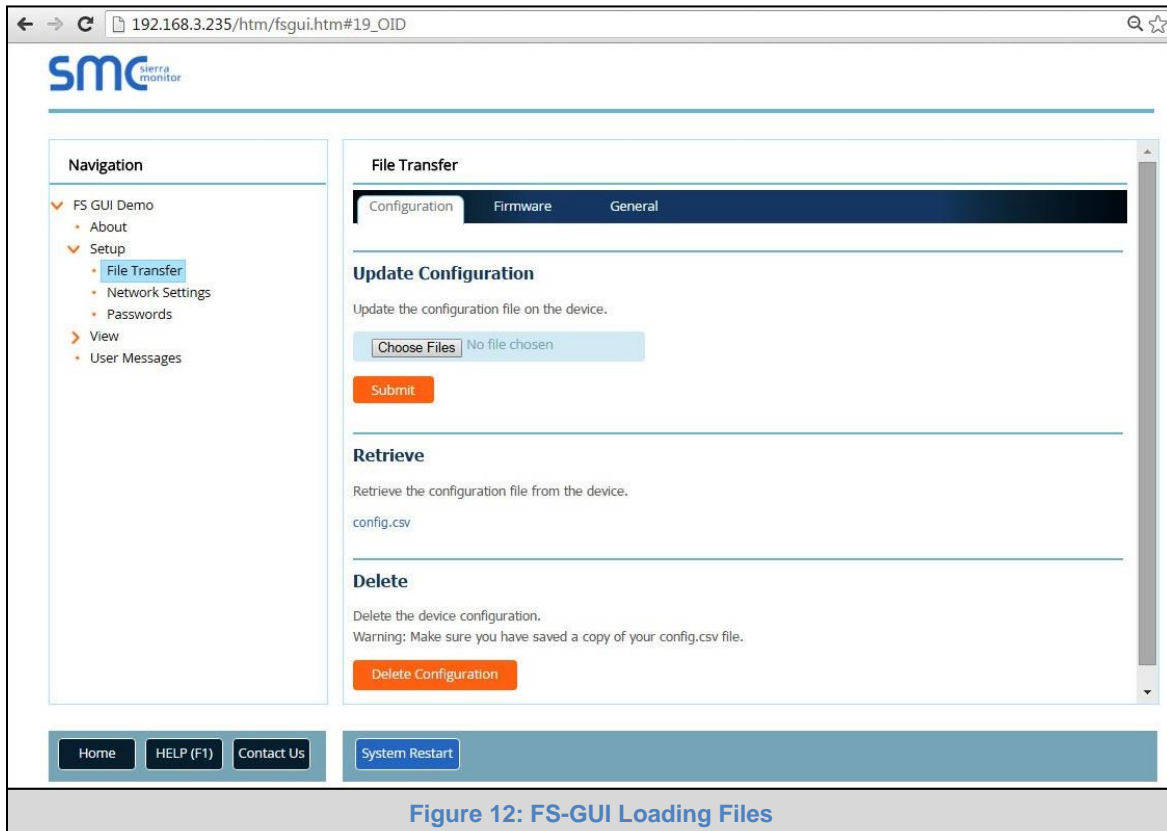
- Browse and select the .csv file, open, then click “Update Config”.



- Once download is complete, click the Restart Button (or simply cycle power to the FieldServer) to put the new file into operation. Note that it is possible to do multiple downloads to the FieldServer before resetting it.

4.3.2 Using the FS-GUI to Load a Configuration File

- In the main menu of the FS-GUI screen, click “Setup”, then “File Transfer” and finally “Update”.
- Browse and select the .csv file, open, then click “Submit”.

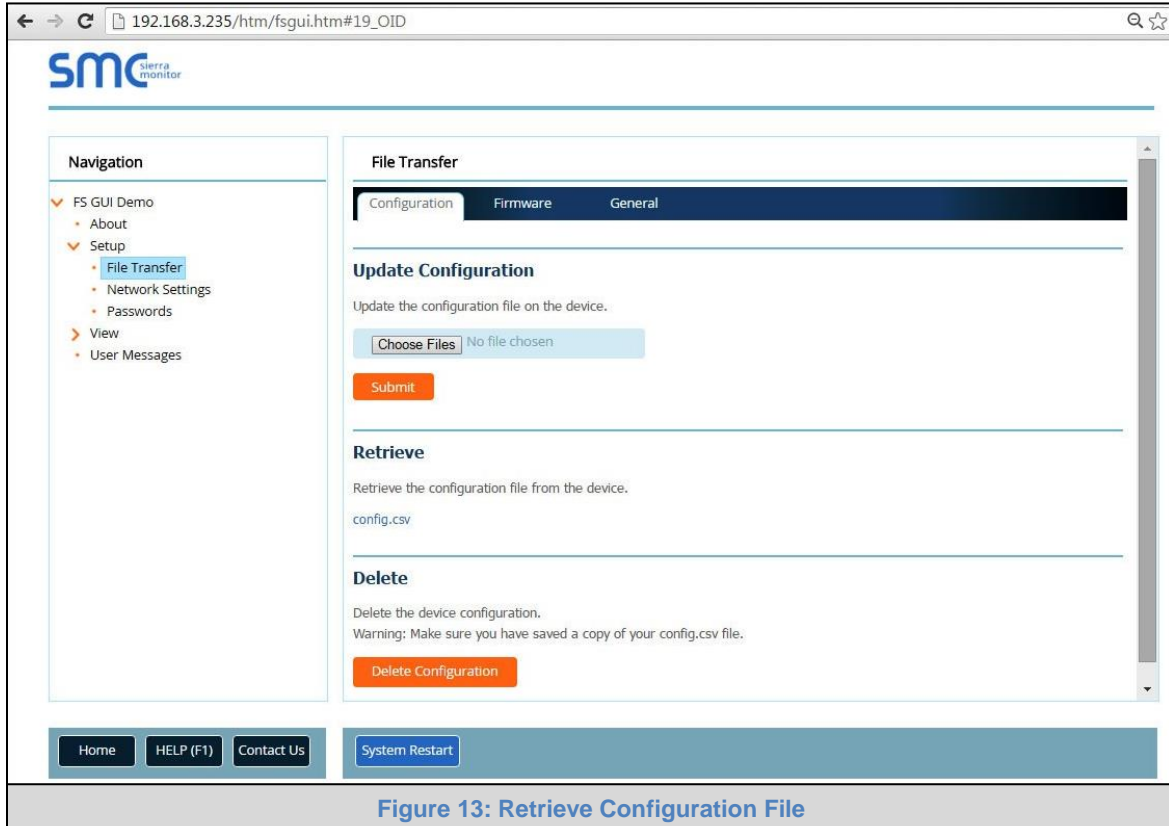


- Once download is complete, a message bar will appear confirming that the configuration was updated successfully.
- Click the System Restart Button to put the new file into operation. Note that it is possible to do multiple downloads to the FieldServer before resetting it.

4.3.3 Retrieve the Configuration File for Modification or Backup

To get a copy of the configuration file for modifying or backing up a configuration on a local computer, do the following:

- In the main menu of the FS-GUI screen, click “Setup”, then “File Transfer”.



- Click the “config.csv” link under the “Retrieve” heading in the middle section of the screen.
 - The file will automatically download to the web browser’s default download location.
- Edit or store the file as desired.

NOTE: Before using any backup configuration file to reset the configuration settings, check that the backup file is not an old version.

4.4 Test and Commission the FieldServer

- Connect the FieldServer to the third party device(s), and test the application.
- From the main menu of FS-GUI click on “View”, then “Connections” to see the number of messages on each protocol.

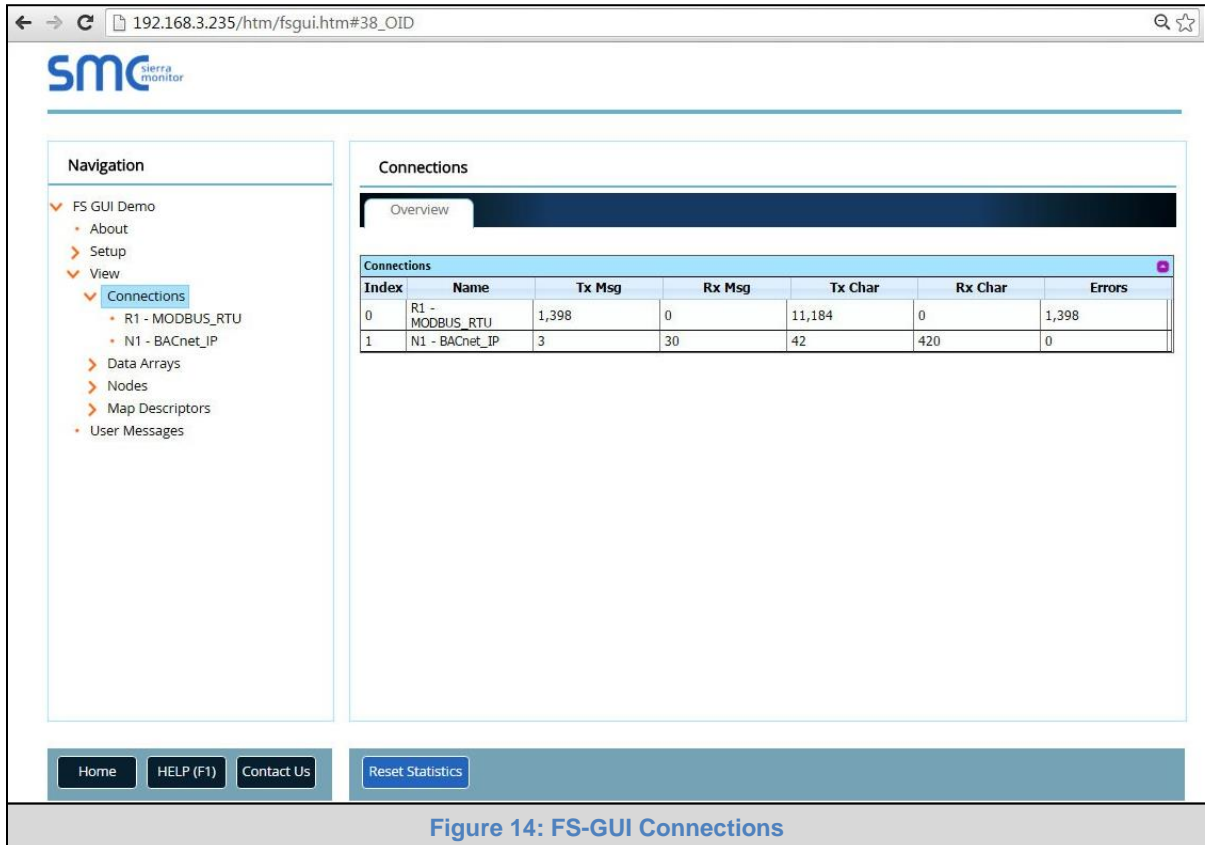


Figure 14: FS-GUI Connections

- For troubleshooting assistance refer to [Appendix A](#), or any of the troubleshooting Appendices in the related Driver Supplements and Configuration Manual. Sierra Monitor also offers a support page on the Sierra Monitor website at www.sierramonitor.com/customer-care/resource-center, which contains helpful resources and documentation.

Appendix A. Troubleshooting

Appendix A.1. Communicating with the FieldServer over the Network

- Confirm that the network cabling is correct.
- Confirm that the computer network card is operational and correctly configured.
- Confirm that there is an Ethernet adapter installed in the software configuration, and that it is configured to run the TCP/IP protocol.
- If using Windows XP or later, ensure that the firewall is disabled.
- Open Command Prompt.
- Type in "ipconfig".
- The account settings should be displayed.
- Ensure that the IP address is on the same Subnet of the FieldServer.
 - Default N1 IP Address is 192.168.2.101
 - Default N2 IP Address is 192.168.3.101
- The IP address of the FieldServer can be changed using the FS-GUI. Refer to the FieldServer FS-GUI manual for more information.

Appendix A.2. Before Contacting Technical Support take a Diagnostic Capture

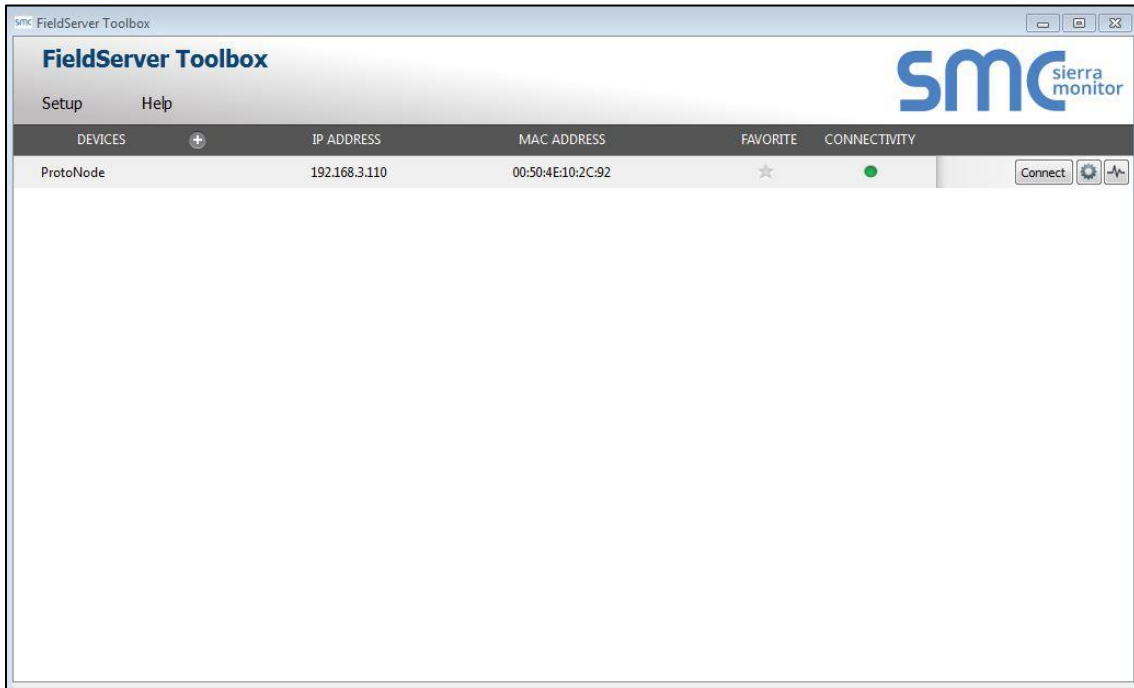
When a problem occurs that cannot be resolved with regular troubleshooting, take a log via the FieldServer Toolbox. Send this log together with a detailed description of the problem to support@sierramonitor.com for evaluation. The Diagnostic Capture will allow us to rapidly diagnose the problem.

NOTE: While all necessary documentation is shipped with the FieldServer on the USB flash drive, these documents are constantly being updated. Newer versions may be available on the web at www.sierramonitor.com/customer-care/resource-center.

- Ensure that FieldServer Toolbox is Loaded on the PC that is currently being used, or download FieldServer-Toolbox.zip on the Sierra Monitor webpage, under Customer Care: Resource Center, Software Downloads:
www.sierramonitor.com/customer-care/resource-center?filters=software-downloads
- Extract the executable file and complete the installation.
- Disable firewall and virus protection software if possible.
- Connect a standard CAT5 Ethernet cable between the PC and FieldServer.
- Double click on the FS Toolbox Utility.

Step 1: Take a Log

- Click on the diagnose icon  of the desired device

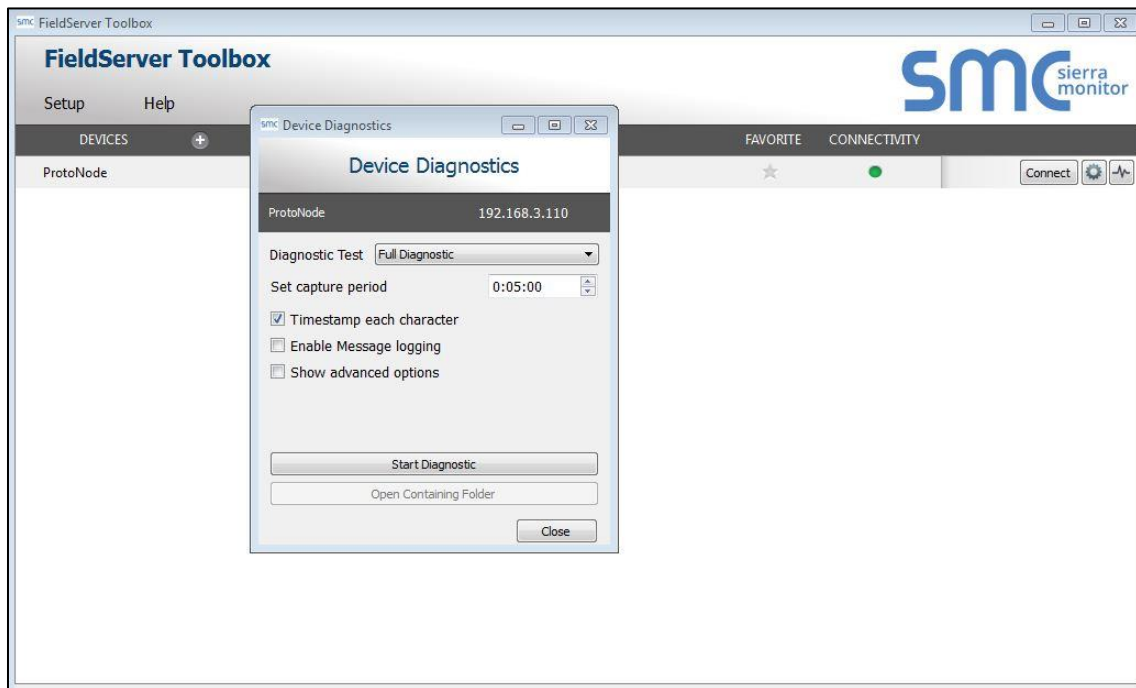


- Select "Full Diagnostic"



NOTE: If desired, the default capture period can be changed.

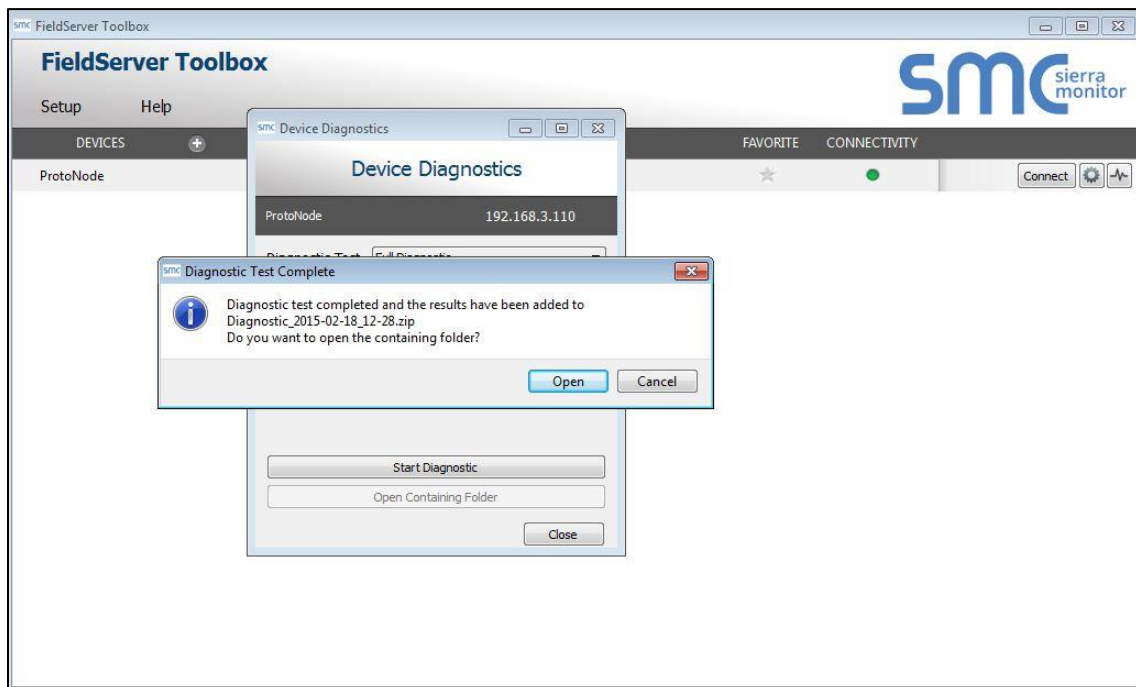
- Click on “Start Diagnostic”




- When the capture period is finished, the “Diagnostic Test Complete” window will appear

Step 2: Send Log

- Once the diagnostic test is complete, a .zip file will be saved on the PC



- Click “Open” to launch explorer and have it point directly at the correct folder
- Email the diagnostic zip file to support@sierramonitor.com

 Diagnostic_2014-07-17_20-15.zip

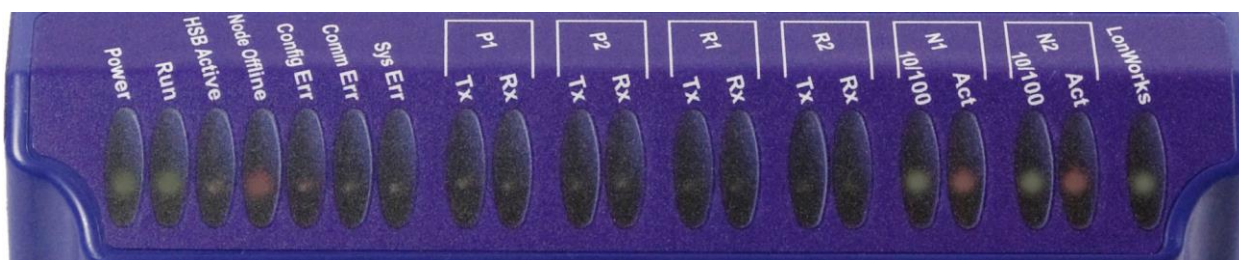
2014/07/17 20:16

zip Archive

676 KB

Appendix B. LED Functions

Appendix B.1. LED Identification and Function



Light	Description
Power	The power light should show steady green at all times when the FieldServer is powered.
Run	The run light indicates that the FieldServer firmware is running. It should flash green once per second once the FieldServer has booted up. Note that it may take a while from power up to boot up the FieldServer if the loaded configuration is particularly large.
HSB Active	Two FieldServers can be connected in a hot standby configuration to ensure reliability in the case of a vital system failure on the Active FieldServer. Refer to the FieldServer Configuration Manual for more information. A steady amber light indicates which FieldServer in a hot standby pair is currently active.
Node Offline	An amber light will burn when a configured node in the FieldServer is detected as being offline. See Node overview screen in the remote user interface for further details
Config Err	An amber light will burn if a configuration error exists in the active configuration. See Error screen in the remote user interface for description of configuration error.
Comm Err	The communications light will turn amber if there is a communications error detected. To establish the cause of the error, go to the error screen of the FS-GUI interface.
Sys Err	The system light will burn red if there is a system error on the FieldServer. If this occurs, immediately report the related “system error” shown in the error screen of the FS-GUI interface to technical support for evaluation.
RS-232 Lights (P1, P2)	These lights are related to the RS-232 serial ports provided on the FieldServer. The Rx (Receive) light will flash red if the FieldServer is receiving data. The Tx (Transmit) light will flash red if the FieldServer is sending data. The frequency of the flashing is directly related to the frequency of data transfer.
RS-485 Lights (R1, R2)	These lights are related to the RS-485 serial ports provided on the FieldServer. The Rx (Receive) light will flash red if the FieldServer is receiving data. The Tx (Transmit) light will flash red if the FieldServer is sending data. (Note that due to the nature of 2-wire RS-485 the Rx light will flash every time the Tx light flashes). The frequency of the flashing is directly related to the frequency of data transfer.
Ethernet Lights (N1,N2)	These lights are related to the two Ethernet network ports provided on the FieldServer. The 10/100 light indicates connection speed. LED Off = 10; LED On = 100. The Act (Activity) light indicates link and activity on the network. The LED will be Off if there is no link, On if there is a link and blinking represents activity on the link.
LonWorks®	This light indicates activity on the LonWorks® port. Refer to Appendix B.2.1 for behavior interpretation.

Appendix B.2. LED Interpretation

Sys Err	HSB Active	Com Err	Config Err	Active	Node Offline	Run	PWR	Description
						FLASH	ON	Indicating Power.
					ON	FLASH	ON	One of the configured nodes is offline.
	ON					FLASH	ON	FieldServer is active in a Hot Standby configuration.
ON						FLASH	ON	System Error. Contact support.
			OFF			FLASH	ON	RELEASE DCC running.
			ON			FLASH	ON	Configuration error.
			FLASH			FLASH	ON	Demo Mode.
Flash Once	Flash Once	Flash Once	Flash Once	Flash Once	Flash Once	Flash Once	ON	Sequence of LEDs – shows a boot cycle attempt.

Appendix B.2.1. LonWorks LED Interpretation

Explicit	Implicit – Not Commissioned	Implicit – Commissioned
Off	Flashing	Off

Appendix B.3. LED Power up sequence

1. Start-up: All LED's on.
2. Load Bios: Run LED will switch off after completion.
3. Load U-boot: HSB Active LED will switch off after completion.
4. Load Linux Kernel: Node Offline LED will switch off after completion.
5. Load Ethernet driver: Config LED will switch off after completion.
6. Load Flash File: Sys LED will switch off after completion.
7. Load Application Firmware: Sys Error LED will switch off after completion.

Appendix C. Supplied Connector Kit (FS-8915-11)

The following connector is supplied to facilitate RS-232 communications on the RJ-45 RS-232 port. The table in the diagram shows the functions applied to each of the RJ-45 pins by the FieldServer to assist in determination of the required pinout configuration for connection to the third party device.

NOTE: FS-B35XX Series RS-232 numbering convention is reverse to the 10BaseT numbering.

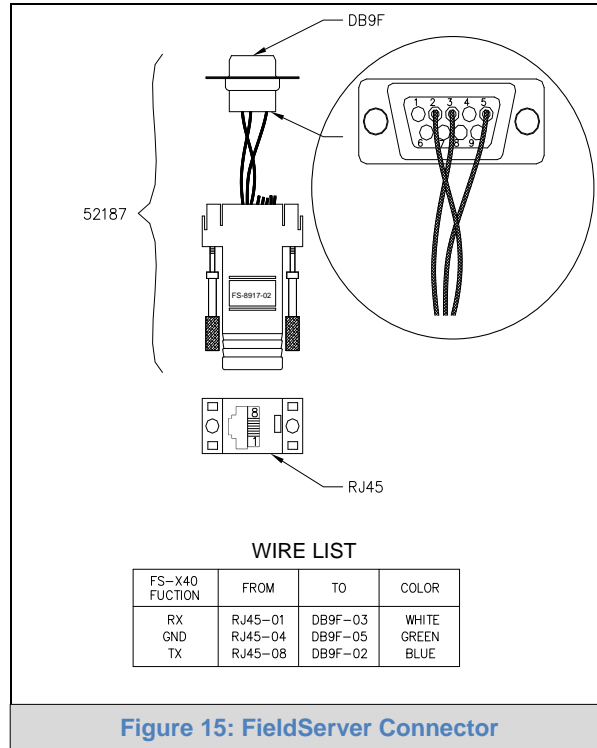


Figure 15: FieldServer Connector

Appendix D. Limited 2 Year Warranty

Sierra Monitor Corporation warrants its products to be free from defects in workmanship or material under normal use and service for two years after date of shipment. Sierra Monitor Corporation will repair or replace any equipment found to be defective during the warranty period. Final determination of the nature and responsibility for defective or damaged equipment will be made by Sierra Monitor Corporation personnel.

All warranties hereunder are contingent upon proper use in the application for which the product was intended and do not cover products which have been modified or repaired without Sierra Monitor Corporation's approval or which have been subjected to accident, improper maintenance, installation or application, or on which original identification marks have been removed or altered. This Limited Warranty also will not apply to interconnecting cables or wires, consumables or to any damage resulting from battery leakage.

In all cases Sierra Monitor Corporation's responsibility and liability under this warranty shall be limited to the cost of the equipment. The purchaser must obtain shipping instructions for the prepaid return of any item under this warranty provision and compliance with such instruction shall be a condition of this warranty.

Except for the express warranty stated above, Sierra Monitor Corporation disclaims all warranties with regard to the products sold hereunder including all implied warranties of merchantability and fitness and the express warranties stated herein are in lieu of all obligations or liabilities on the part of Sierra Monitor Corporation for damages including, but not limited to, consequential damages arising out of/or in connection with the use or performance of the product.