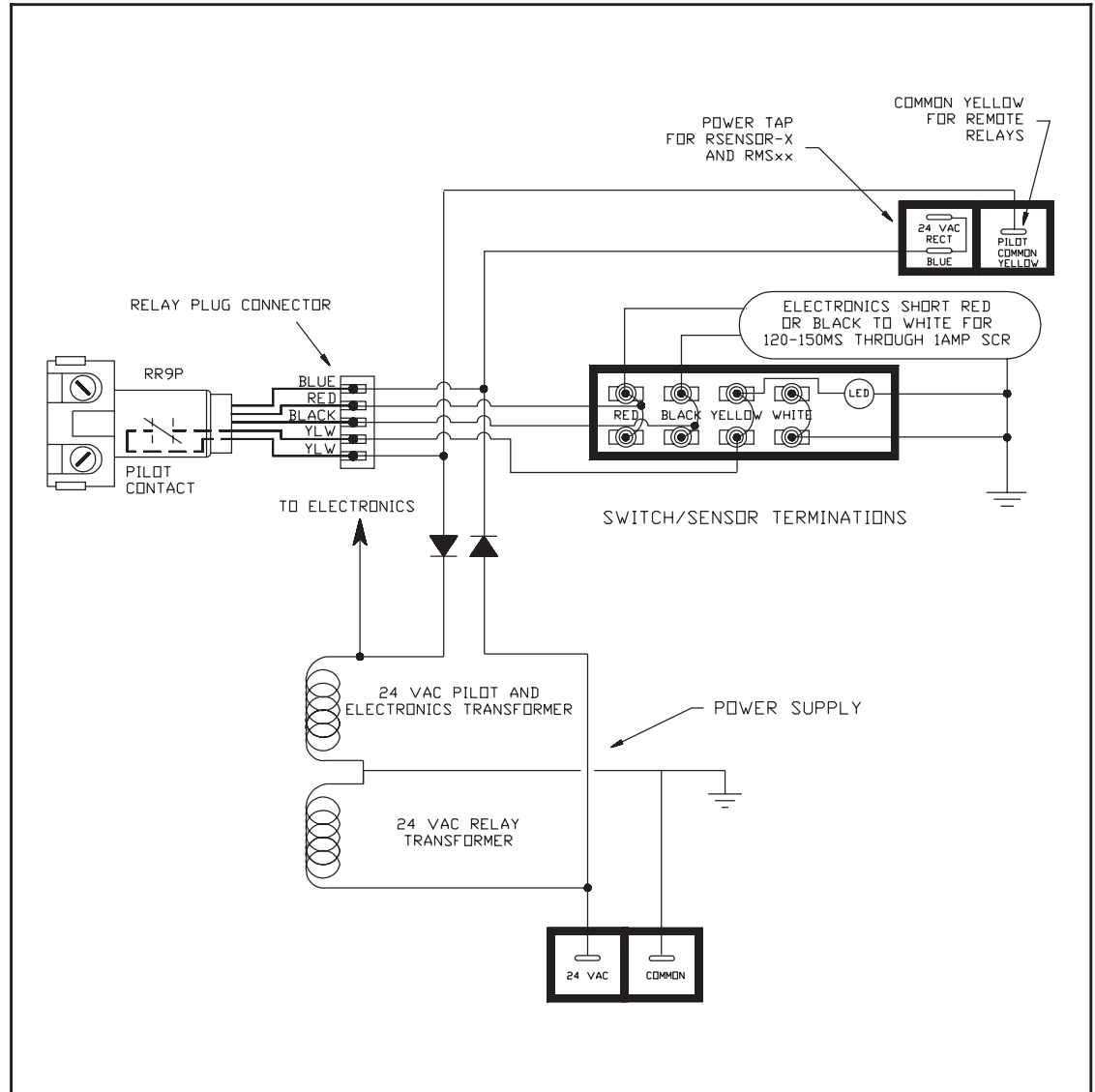


# Submittal Drawing: RMOTHER-x



## RMOTHER-x DESCRIPTION

The RMOTHER-x is the motherboard for a GE Lighting Automation Panel. It provides the physical interconnection between the relay, power supply, switches or sensors, and the plug-in electronics / intelligence cards.

The diagram above shows the internal wiring of a typical relay point.

## SPECIFICATIONS

**Description:** Lighting Automation Panel termination Board

**Catalog #:**  
 RMOTHER-1 Relays 1-24, PSS 1-6, PMS A&B  
 RMOTHER-2 Relays 25-48, PSS 7-12

**Operating Environment:** 0-55 Degrees C (32-131F)  
 0-95% RH, Non Condensing  
 Non Corrosive Atmosphere

Job Name: \_\_\_\_\_

Page: \_\_\_\_ of \_\_\_\_