

FS-8705-14 – Harshaw Trane – Driver for XML HVAC Building Automation Schedules

DATASHEET – Rev 1

DESCRIPTION

The XML Schedule driver will use the HTTP protocol over TCP/IP to poll for XML Schedule data from a configurable URL. The data will be parsed according to fixed filter criteria and stored in Data Array locations that are configurable for each zone. This data may then be served or written to a remote device/system by using another FieldServer driver such as BACnet/IP.

The Driver will process an XML file looking for <Schedule> objects. It will identify the zone. For each zone the driver will compare the Start time against the FieldServer current time and find the <Schedule> object for that zone that is currently active or that will be active next. The start date and time will be extracted from the object and stored in FieldServer Data array configured for that zone. Each element of the date and time will be stored in a different data array location.

Since FieldServer allows any Data Array locations to be mapped onto another protocol it will be possible to serve or write this data to another device using another protocol such as BACnet/IP. For example – if this object

```

<Schedule>
  <Zone>MRC Zone 1</Zone>
  <Start>2008-10-07T11:30:00</Start>
  <End>2008-10-07T14:30:00</End>
</Schedule>
    
```

The driver allows for a remote device to periodically synch the time of the FieldServer.

The driver will be a client only. This means that it can poll for the XML data but will not be able to process unsolicited XML pages sent to the FieldServer.

Server functionality is provided only to support our ongoing quality assurance program by facilitating automated testing of the driver. It is not documented or supported. If required please contact the FST sales group to discuss your requirements.



FS-8705-14 XML Schedule

CONNECTION FACTS

FIELDSEVER MODE	NODES	COMMENTS
Client	Many	The FieldServer will be able to poll multiple XML servers
Server	0	Not supported or documented.

FORMAL DRIVER TYPE

Ethernet
Client

COMPATIBILITY

FIELDSEVER MODEL	COMPATIBLE
FS-x2010	Yes
FS-x2011	Yes
FS-x40	Yes
FS-X30	Yes

CONNECTION INFORMATION

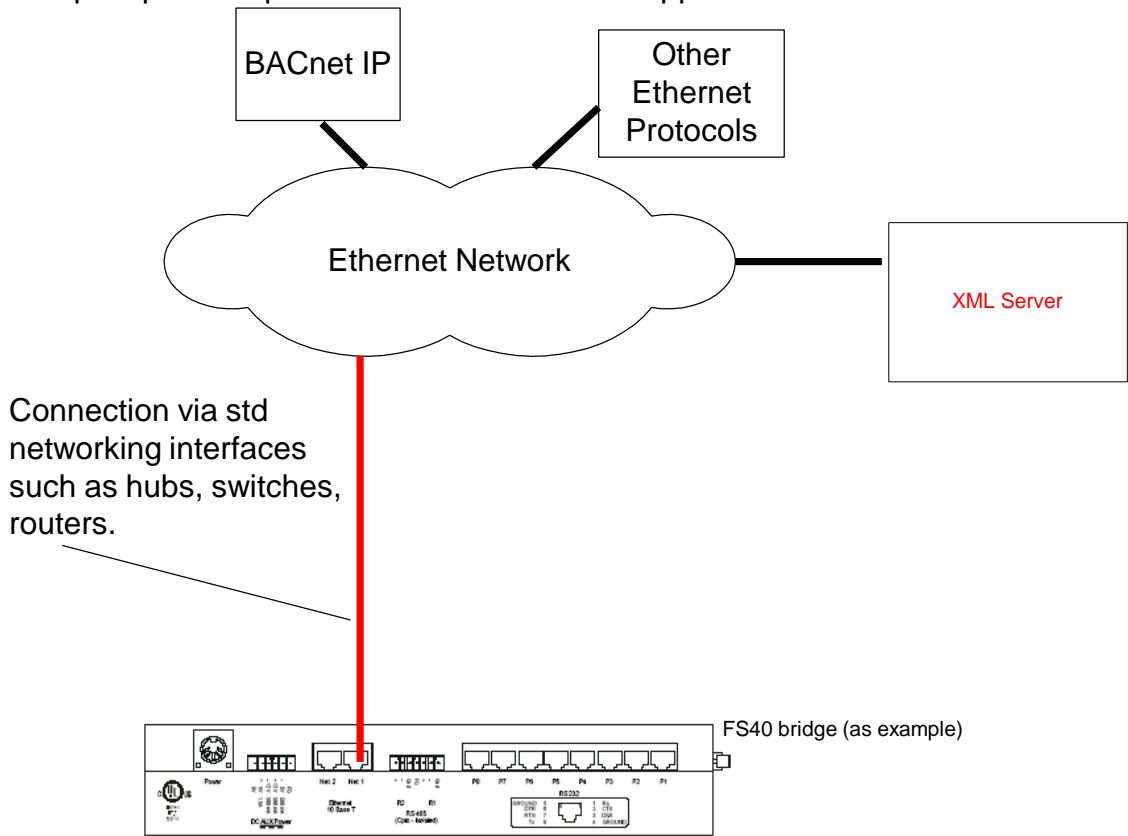
Connection Type: Ethernet TCP/IP
Hardware Interface: **FieldServer Ethernet Adapters (N1 / N2 as available)**
Multidrop Capability: No
Source Port: 80 - Configurable

DEVICES TESTED

DEVICE	TESTED (FACTORY, SITE)

CONNECTION CONFIGURATIONS

Multiple upstream protocols and connection supported. See list of FieldServer Drivers.



DRIVER FUNCTIONALITY

The Driver will process an XML file looking for <Schedule> objects. It will identify the zone. For each zone the driver will compare the Start time against the FieldServer current time and find the <Schedule> object for that zone that is currently active or that will be active next. The start date and time will be extracted from the object and stored in FieldServer Data array configured for that zone. Each element of the date and time will be stored in a different data array location.

Since FieldServer allows any Data Array locations to be mapped onto another protocol it will be possible to serve or write this data to another device using another protocol such as Bacnet/IP.

For example – if this object

```
<Schedule>  
  <Zone>MRC Zone 1</Zone>  
  <Start>2008-10-07T11:30:00</Start>  
  <End>2008-10-07T14:30:00</End>  
</Schedule>
```

is selected by the filtering process as the appropriate schedule for zone 1 then the FieldServer will store the following information.

DATA ARRAY OFFSET (RELATIVE TO CONFIGURED BASE OFFSET FOR SPECIFIC ZONE)	DATA
0	2008
1	10
2	07
3	11
4	20
5	00
6	2008
7	10
8	07
9	14
10	20
11	00

CUSTOMER SUPPORT

XML Schedule Driver for FieldServer was developed by Chipkin, and we are proud to provide support for our products. For technical support, sales and customer service, please call us at 1 (866) 383-1657.

Thanks for choosing Chipkin's products and integration services to meet your building and industrial automation requirements!

Chipkin™ is a building and industrial automation protocol expert. We develop, configure, install and support gateways (protocol converters), data loggers and remote monitor and controlling applications. Founded in October 2000, Chipkin provides expert solutions for converting BACnet®, Modbus®, and LonWorks®—to name just a few—and enabling interfaces for HVAC, fire, siren, intercom, lighting, transportation and fuel systems. The high-quality products we offer (including those from other vendors) interface with Simplex™, Notifier™, McQuay™, GE™ and many others—so you can rest assured that we will select the most appropriate solution for your application.

With Chipkin you are buying a solution. Our configuration expertise in this field combined with free BACnet and other tools ensure your success; and our customer support via phone, email and remote desktop tools means that we are there when you need us. Chipkin is a small responsive company, and we live or die by the quality of our service—and with offices in two time zones—we can provide support when you need it. Give us a call now!

Sales and Customer Service

Toll Free: +1 866 383 1657

Email: salesgroup1@chipkin.com

All contents are Copyright © 2000-2021 Chipkin Automation Systems Inc. All rights reserved.
This document is Chipkin Public Information

REVISION HISTORY

DATE	RESP.	DRIVER VERSION	DOCUMENT REVISION	COMMENTS
25 Sept 2008	PMC	0.00	0	Created
8 Jun 2021	YC	0.00	1	Updated to latest template