



Hunter Industries ACC2 Irrigation Controller Startup FS-8705-41

Chipkin - Enabling Integration

salesgroup1@chipkin.com

Tel: +1 866 383 1657

© 2021 CHIPKIN AUTOMATION SYSTEMS

Driver Version:
Document Revision:

TABLE OF CONTENTS

1	SETUP DEVICES IP ADDRESS	3
2	TESTING USING WEB DEMO	5
2.1	INSTALLING THE DEMO.....	5
3	TESTING USING BACNET.....	6
4	TESTING USING MODBUS.....	9
5	WINDOWS 10 - CHANGE IP ADDRESS FOR DEMO.....	10

1 Setup Devices IP Address

Method 1 – Adjust reality to match the config

1. Set ACC to 192.168.1.18 Node=3 Port 10001
2. Set Laptop to 192.168.1.201 (See notes labelled “Windows 10 - Change IP Address for demo” at the end of this doc.)
3. Connect gateway, ACC and laptop to router
4. Browse to gateway by typing IP address into chrome address bar : 192.168.1.168
5. View, connection overview, we expect stats for msgs Rx and Tx on the Hunter connection. If these do not count up call for help (See step 5 of method 2)
6. Browse to demo by typing IP address into chrome address bar : 192.168.1.168/acc2.html

Method 2 – Adjust the config to match reality

1. Note the following from the 2 line display on the Hunter ACC Controller
ACC-Com-LAN Address : Example – 3
Lan IP : Example 192.168.1.168
Lan Port : Example 1001
If you wish to change these follow the procedures provided by Hunter Industries.
2. Upload the configuration from the Gateway
Procedure provided in ‘Simplified Support for Gateways - Chipkin 2019 October.pdf’
3. Edit the configuration. It is better to use notepad than Excel.

Connections									
Adapter	protocol	Hunter_SystemID	Hunter_FCB	Poll_Delay	Timeout	Hunter_Lan_Port			
N1	HunterACC	130	169	0.05s	2.2s	10001			
Nodes									
Node_Name	IP_Address	node_ID	Hunter_Siteld	Protocol	Adapter	Recovery_Interval	Retry_Interval		
ACC99	192.168.1.18	3	0	HunterACC	N1	0.1s	0.1s		

Check, change as required.

4. Download the edited configuration file to the gateway, restart the gateway to give effect to the changes.

Procedure provided in ‘Simplified Support for Gateways - Chipkin 2019 October.pdf’

5. Browse to the Gateway
View the connections – You should see messages counting up on the Hunter connection.

The screenshot shows the Sierra Monitor FieldPoP web interface. On the left is a 'Navigation' menu with options like 'About', 'Setup', 'View', 'Connections', 'Data Arrays', 'Nodes', 'Map Descriptors', and 'User Messages'. The 'Connections' section is active, displaying a table with the following data:

Index	Name	Tx Msg	Rx Msg	Tx Char	Rx Char	Errors
0	N1 - HunterACC	451	450	8,924	98,410	0
1	N1 - CAS_TOOLN1	78	0	0	0	0
2	N1 - Modbus/TCP	0	0	0	0	0
3	N1 - Dnp3_Ethernet	0	0	0	0	0

A blue callout box points to the 'Rx Msg' column of the table, containing the text: "Check that messages are being exchanged." At the bottom of the interface, there are buttons for 'Home', 'HELP (F1)', 'Contact Us', and 'Reset Statistics'. The taskbar at the bottom shows several open applications including 'table-2.csv', 'table-3.csv', and 'mobizen (2).exe'.

Points List

“FS-8705-41 Hunter Industries ACC2 Irrigation Controller - Data Objects.xlsx”

Google it to find it.

2 Testing Using WEB demo

Browse to the page `acc2.html` on the gateway. If you get a 404 error then email `support@chipkin.com` . They will provide you with the Hunter Web Demo files.

`192.168.1.169/acc2.html`

ACC2 Human Interface



Simple Commands
FIELD CONTROLLER SYSTEM GLOBALS (01 02)
SET STACKING MODE AND LIMITS (03 04)
REPORT VERSIONS (0a)
FLOW OPERATION PARAMETERS (0c 0d)
REPORT ITEM INFORMATION (0e)
DECODER MODULE STATION ASSIGNMENTS (10 15)
ITEM NAMES (12 32)
SET STATION PARAMETERS (13 33)
MAINSAFE PARAMETERS (17 18)
FLOW ZONE PARAMETERS (19 1a)
FLOW SENSOR PARAMETERS (1b 3b)
PROGRAM HEADER DATA (1e 3e)
TODO - SET FIELD CONTROLLER PROGRAM EVENT RUN TIME DATA (1f)
SET RAIN DELAY VALUES (20 21)
SEASONAL ADJUST VALUES (23 25)

2.1 Installing the demo

Make a folder called temp on your C Drive

Copy the zip file to `c:\temp`

Unzip the files in `C:\temp`

Start a DOS Window (Hold windows key and push the R key, Type CMD and click OK)

Change folder by typing : `cd\temp<Enter>`

If 1.2.3.4 is the IP Address of the gateway then type

`ACC2_sendtogateway 1.2.3.4 <Enter>`

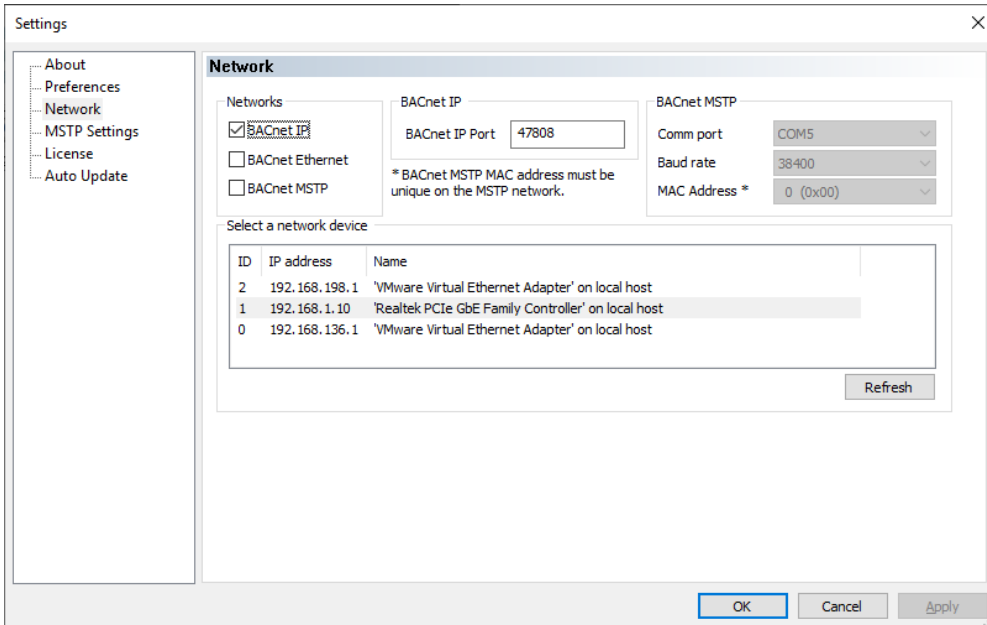
No restart is required. Should work immediately.

3 Testing Using BACnet

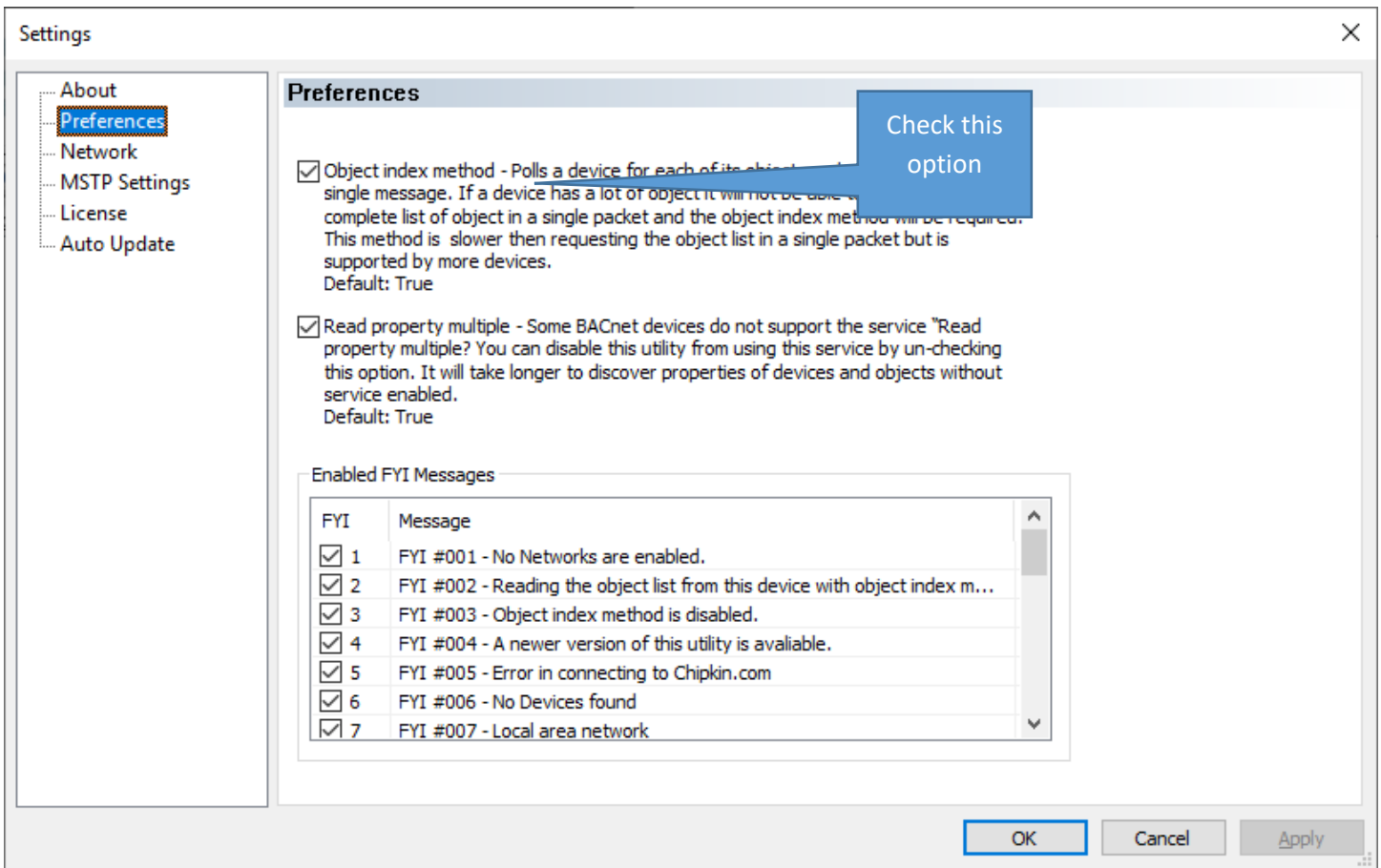
Download CAS BACnet Explorer from this page: <https://store.chipkin.com/products/tools/cas-bacnet-explorer>

Activate – Insert the Green key in your laptop (there is another better way to install permanently on your laptop)

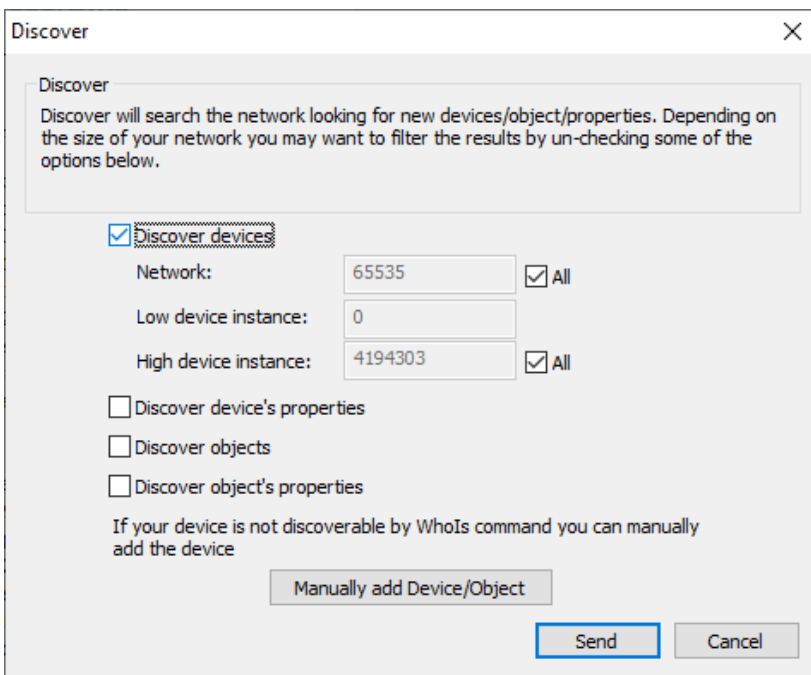
CHANGE SETTINGS – select your network card, turn on BACnet IP



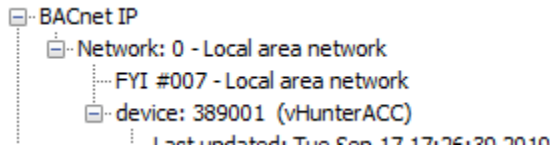
CHANGE SETTING – The object list index is too big to fit in one packet



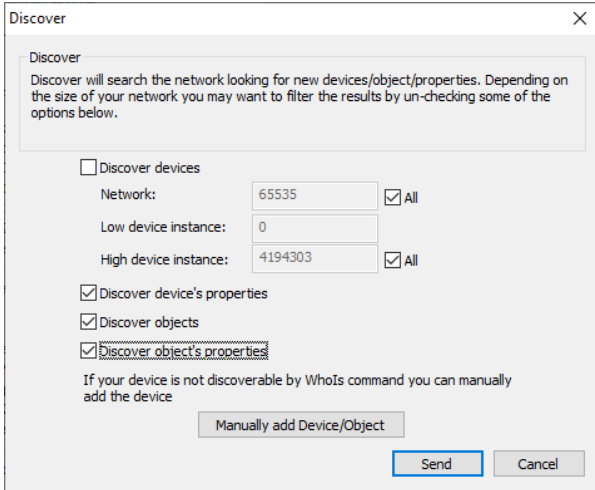
Do discovery – check devices box



You should get this.

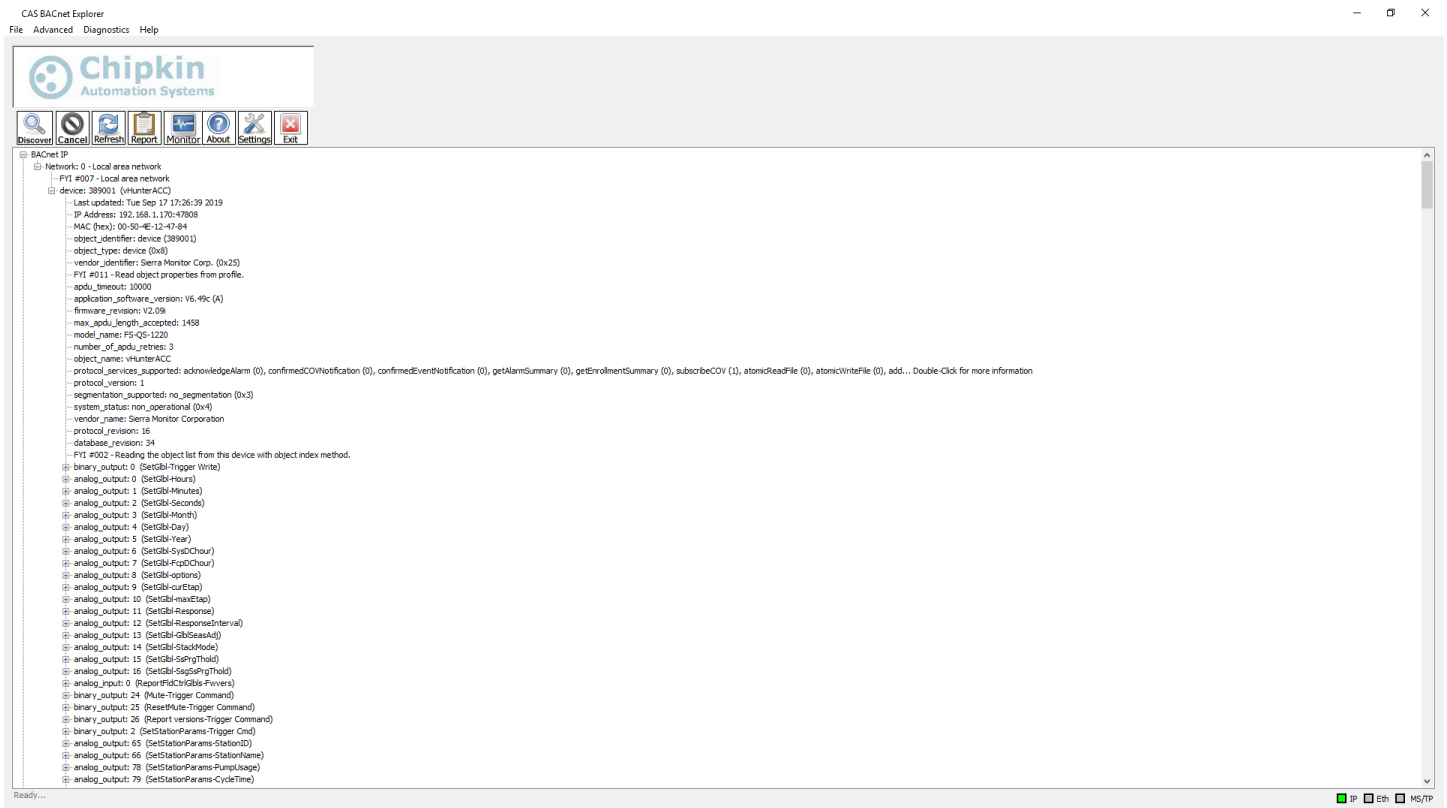


Once the device has been discovered, select it by clicking on the device 389001 , and right click to select DISCOVER again. This time check all the boxes to discover objects on the device.



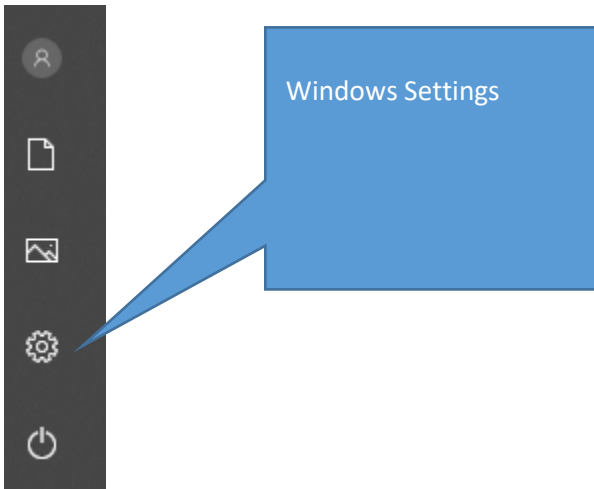
Wait wait wait ... takes a FEW MINUTES


You get this tree. Explore the tree or print a report.





5 Windows 10 - Change IP Address for demo


Windows 10 - Change IP Address of laptop





 **System**
Display, sound, notifications, power


 **Devices**
Bluetooth, printers, mouse


 **Phone**
Link your Android, iPhone


 **Network & Internet**
Wi-Fi, airplane mode, VPN


 **Apps**
Uninstall, defaults, optional features


 **Accounts**
Your accounts, email, sync, work, family

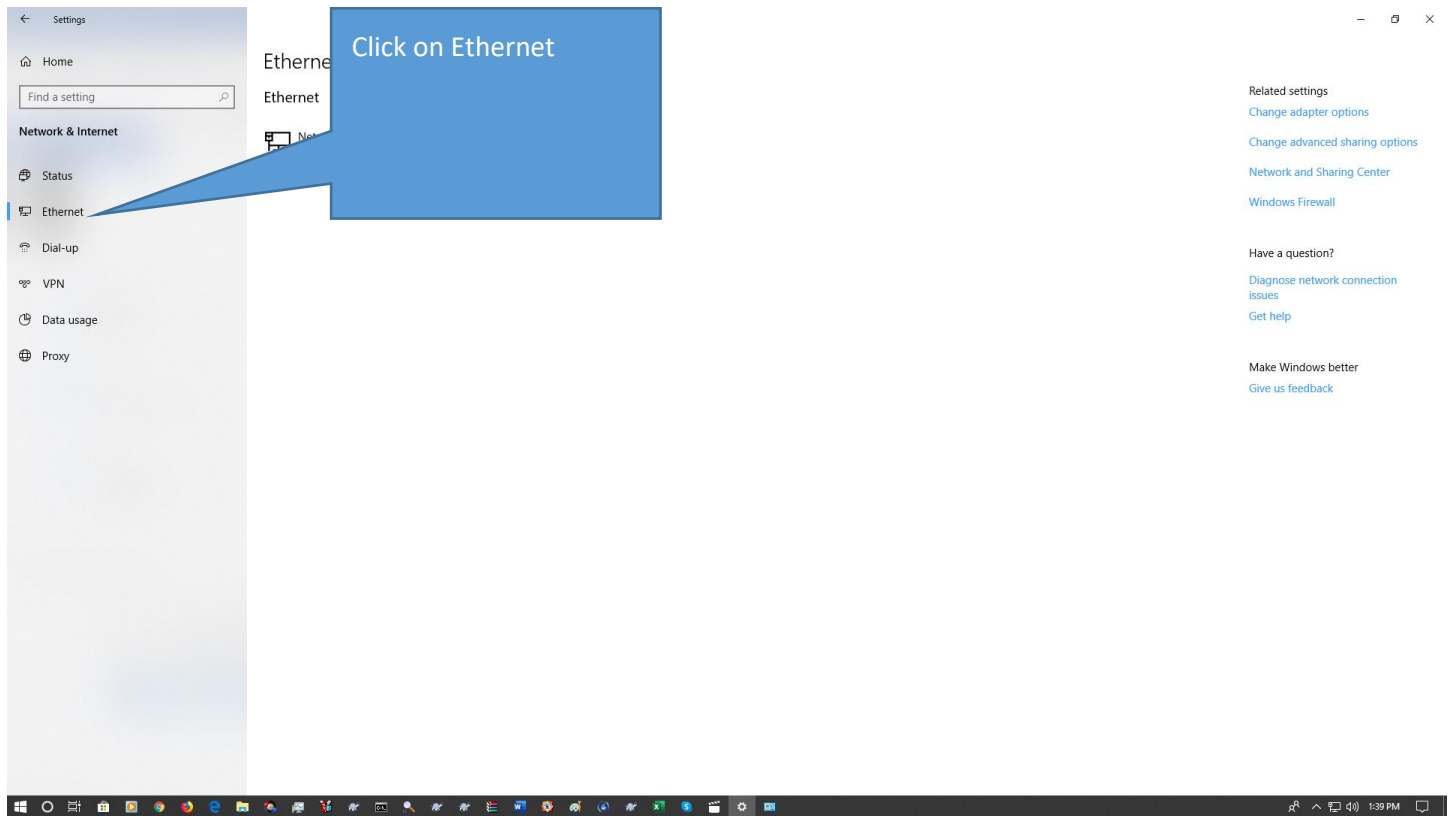
 **Time & Language**
Speech, region, date

 **Gaming**
Game bar, captures, broadcasting, Game Mode

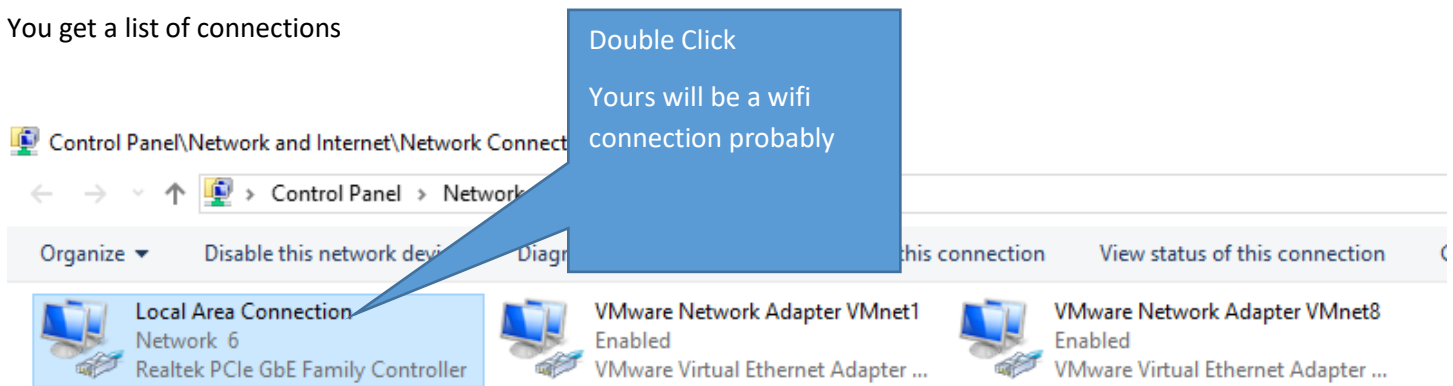
 **Cortana**
Cortana language, permissions, notifications

 **Privacy**
Location, camera

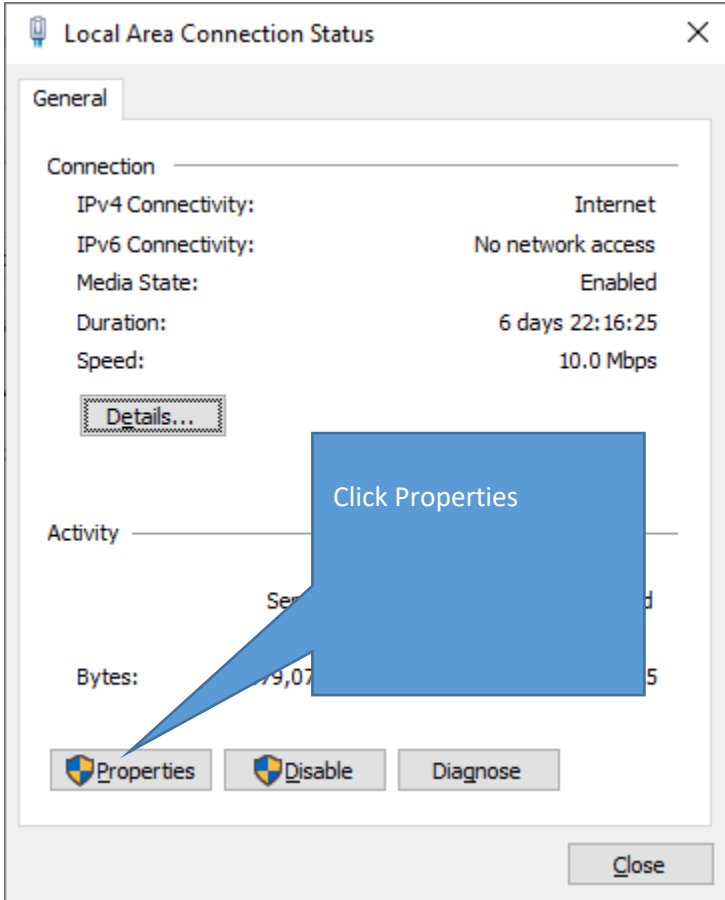
 **Update & Security**
Windows Update, recovery, backup

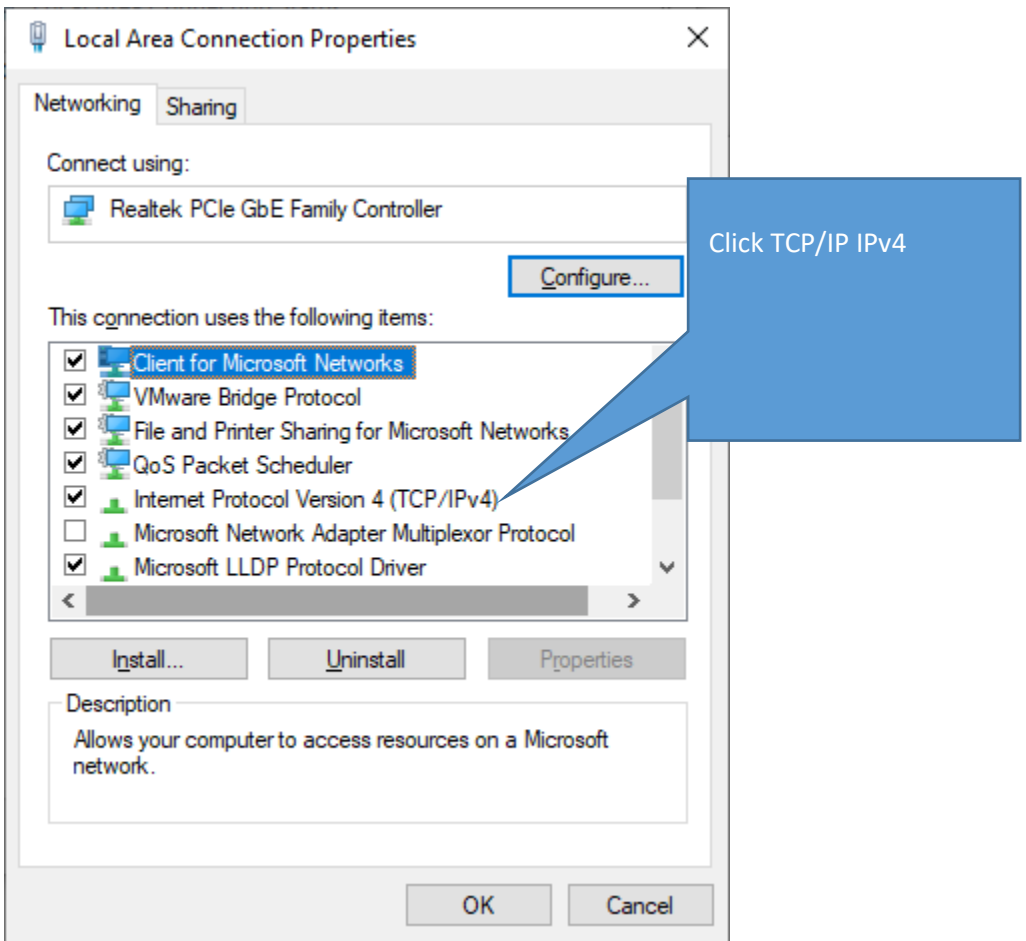


You get a list of connections



You get a dialog





Click TCP/IP IPv4

REVERT by checking this box, clicking ok and closing the various dialogs.

Internet Protocol Version 4 (TCP/IPv4) Properties

General **Alternate Configuration**

You can get IP settings assigned automatically if your network supports this capability. Otherwise, you need to ask your network administrator for the appropriate IP settings.

Obtain an IP address automatically

Use the following IP address:

IP address: [. . .]

Subnet mask: [. . .]

Default gateway: [. . .]

Obtain DNS server address automatically

Use the following DNS server addresses:

Preferred DNS server: [. . .]

Alternate DNS server: [. . .]

Validate settings upon exit

Advanced...

OK Cancel

IP=192.168.1.201
mask=255.255.255.0
gw=192.168.1.1.
, clicking ok and closing
the various dialogs.