



## **Access Gateway and Install new Configuration or Firmware**

**How to report a problem / bug / get an explanation**

**Issues connecting to the web interface?**

**Go to the end of this doc**

Rev 3 - 2021 Oct

Simplified Support

<https://store.chipkin.com/support/chipkin-simplified-support>

## Accessing a Gateway through the Web Interface



Note, your computer needs to be on the same subnet as the gateway!

A screenshot of a web browser window. The address bar shows "Not secure | 192.168.2.101/login/". The page header features the "MSA" logo. A large white warning box is centered on the page with the title "Web Server Security Unconfigured". The text inside the box explains that web server security has not been configured for the gateway and offers two options: "Use HTTPS (Recommended)" and "Continue with HTTP". The "Continue with HTTP" button is highlighted with a red border.

← → ↻ 🏠 ⚠ Not secure | 192.168.2.101/login/ 📄 ☆ ⚙ 👤 ⋮

### MSA

#### ⚠ Web Server Security Unconfigured

Web server security has not yet been configured for the gateway. You have the option to continue with HTTP, which is not secure, or rather to use HTTPS.

When using HTTPS without an internet connection your browser will issue a security warning.

When using HTTPS with an internet connection your browser will redirect you to a trusted domain ie. <https://192-168-1-24.gw.fieldpop.io> for IP address [192.168.1.24](https://192.168.1.24).

[Use HTTPS \(Recommended\)](#) [Continue with HTTP](#)



## Log In

Username



Password



Log In

[Forgot Password?](#)



fieldserver



REF FS-QS-2010-F

SN 220870020002

Input: 24VAC 50/60Hz or 9-30VDC 0.3A

Default Password: ~~MSA123456~~

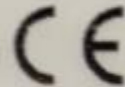
Shipped IP: 192.168.2.101

SO#: 40220070

ETH MAC:

BIOS: 4.8.0

Country of Origin: USA





### Web server security is not configured

Please select a web security profile from the options below.

#### Mode

- HTTPS with default trusted TLS certificate (requires internet connection to be trusted)
- HTTPS with own trusted TLS certificate
- HTTP (not secure, vulnerable to man-in-the-middle attacks)

Save

Notes About Passwords:

- Lower case l's appear as a line "l"
- Upper case l's appear as the roman numeral "I"
- The number one appears "1"
- You can scan the QR code for the password

## How to Install a new configuration file

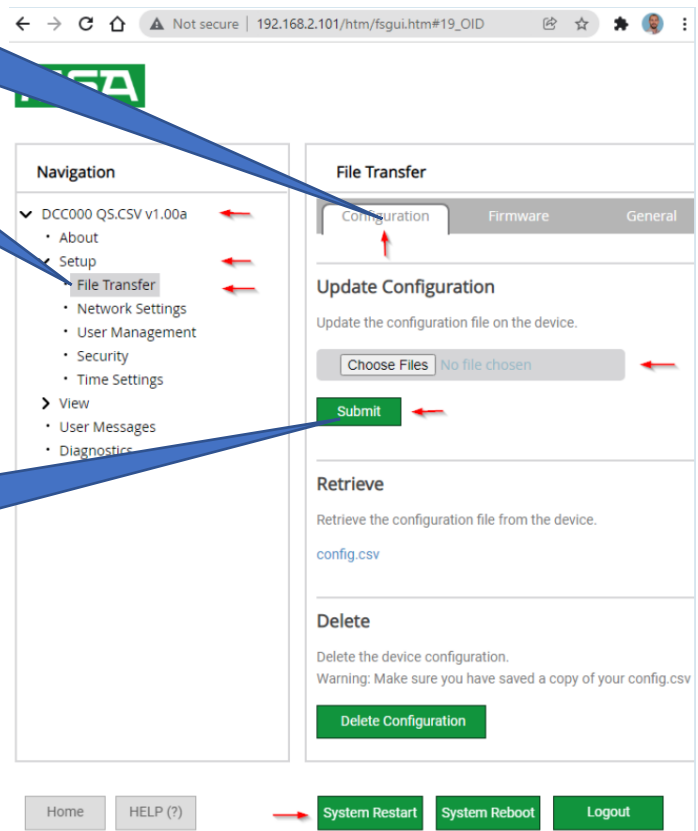


1. Open Browser

2. Type in IP address of Gateway



3. Navigate to Setup/File Transfer/Update Configuration



4. Choose the config file and then Press SUBMIT

5. Restart the System

System Restart

## How to Install a new firmware

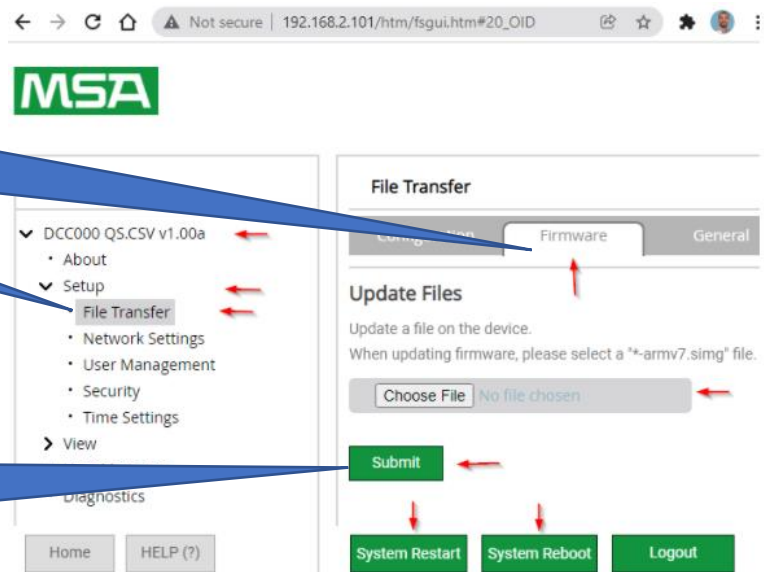


1. Open Browser



2. Type in IP address of Gateway  
By default: 192.168.2.101

3. Navigate to Setup/File Transfer/Update firmware



4. Choose the firmware file and then Press SUBMIT

System Restart

System Reboot

Logout

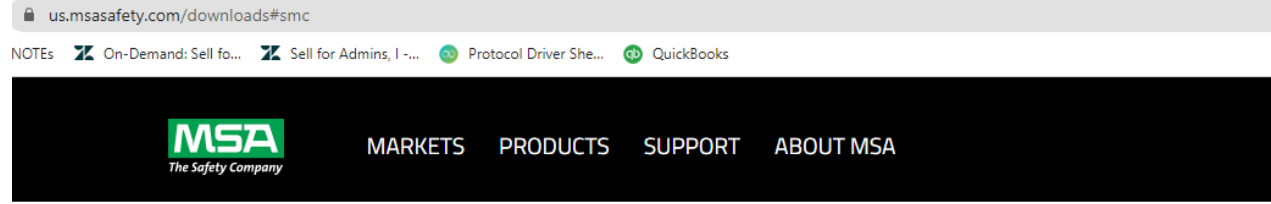
Can't find the tab to download firmware?

[http://192.168.2.194/hm/fsgui.htm#20\\_OID](http://192.168.2.194/hm/fsgui.htm#20_OID)

Or https

5. Reboot the system when loading simg files. else Restart.

# How to Find your gateway and IP address

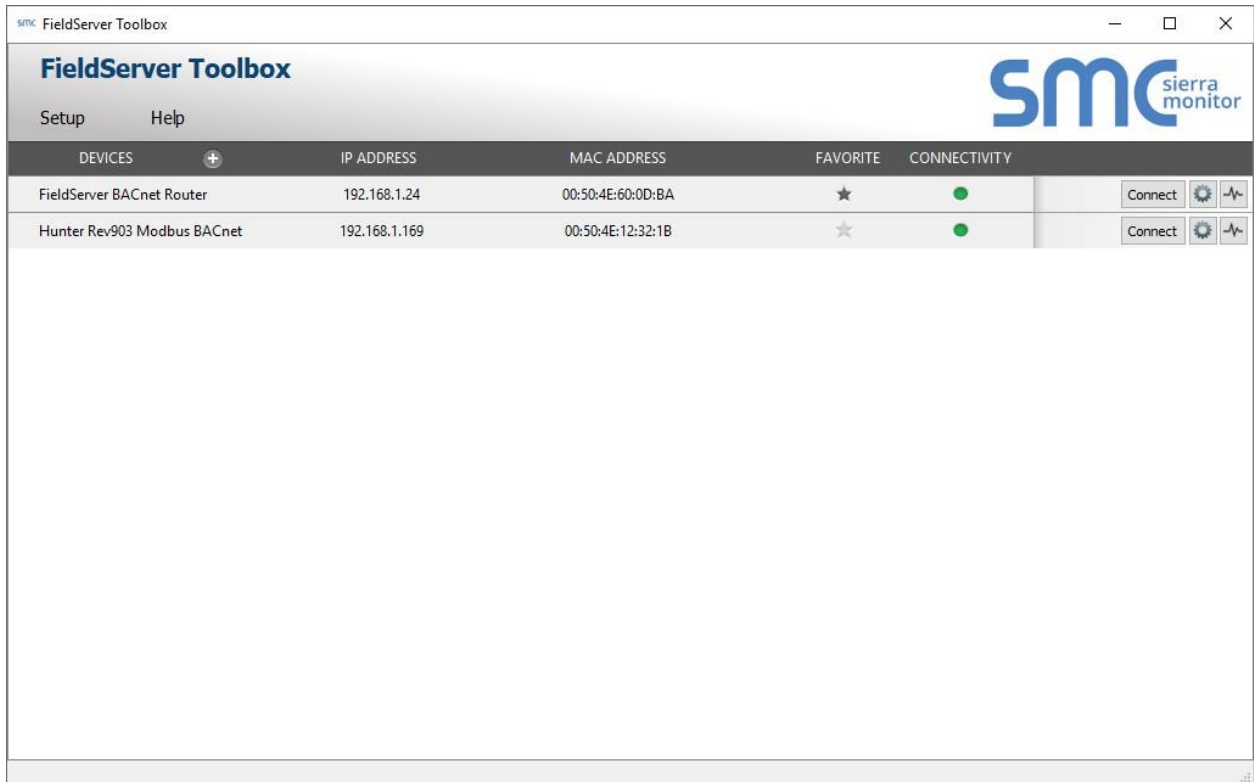


## SMC & FIELDSEVER

Download:

- FieldServer Toolbox
- FS-8700-138 & FS-8704-17 DNP 3.0 Device Profile Files
- FS-8704-26 SNMP Standard MIB File
- FS-B3512-01 Profibus Slave GSD File
- FS-B3514-01 ControlNet EDS File
- FS-B3515-01 DeviceNet Slave EDS File
- FS-8704-14 - EtherNet/IP EDS Files
- SlotServer Resource Files
- FS-RA-CLX-LON-000 External Interface File
- BACnet MS/TP Log Utility

1. [Download and Install](#)



## How to change the IP address



1. Open Browser



2. Type in IP address of Gateway  
By default: 192.168.2.101

MSA FieldServer Manager

Navigation

- ▼ DCC000 QS.CSV v1.00a
  - About
  - ▼ Setup
    - File Transfer
    - Network Settings
    - User Management
    - Security
    - Time Settings
  - View
    - User Messages
    - Diagnostics

Network Settings

Network Settings

ETH 1 Routing

Enable DHCP

IP Address: 192.168.2.101

Netmask: 255.255.255.0

Gateway: 192.168.2.1

Domain Name Server 1 (Optional): 8.8.8.8

Domain Name Server 2 (Optional): 8.8.4.4

Cancel Save

Network Status

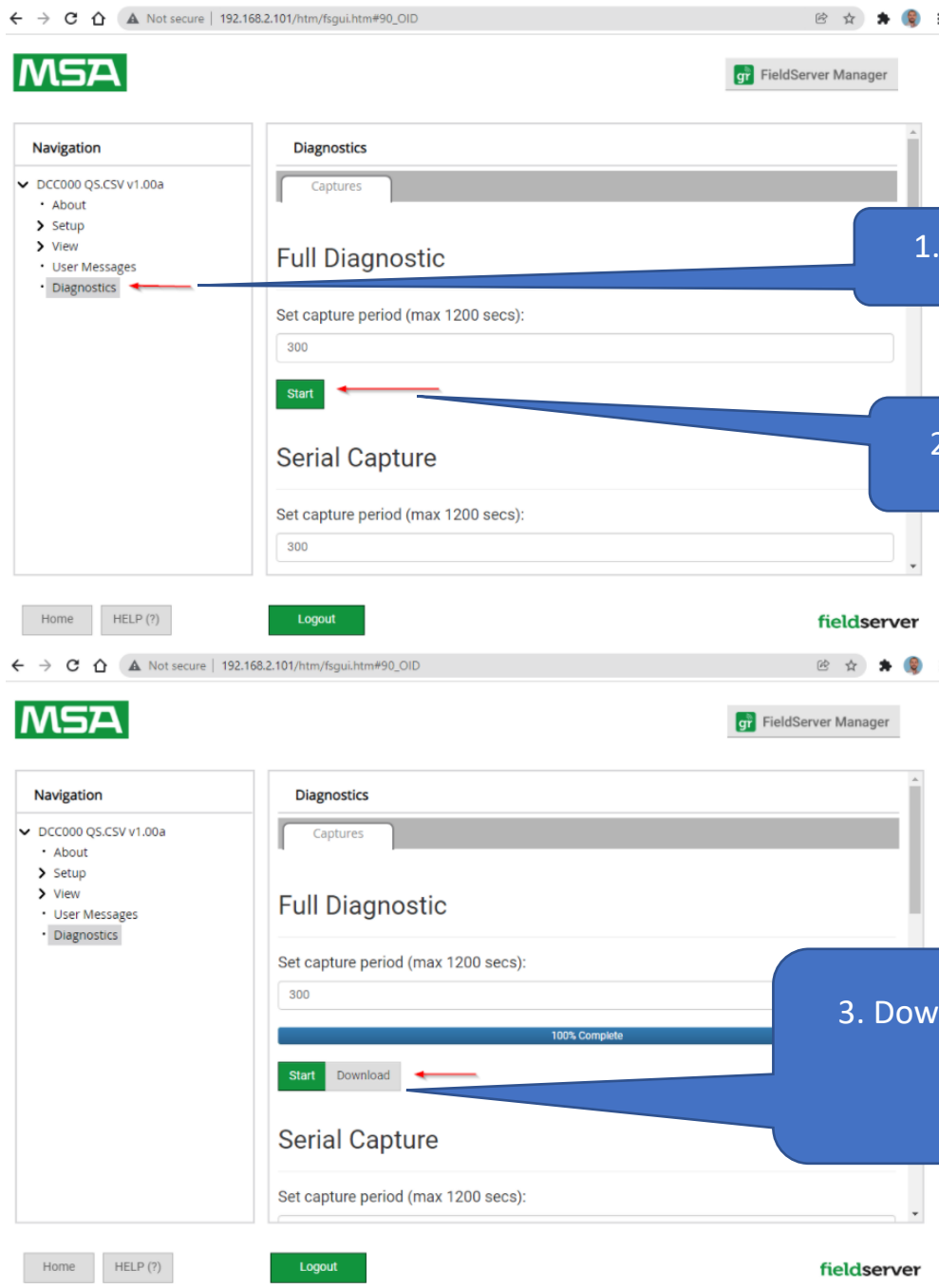
Connection Status	Connected
MAC Address	00:50:4e:60:6e:c1
Ethernet Tx Msgs	20,143
Ethernet Rx Msgs	28,104
Ethernet Tx Msgs Dropped	0
Ethernet Rx Msgs Dropped	0

Home HELP (?) Contact Us Logout fieldserver

## Reporting a Problem / Getting an answer

Help us help you by providing the data we need to resolve your issue. This process gives us the files we need, all the data from the Data Arrays as well as capturing message.





Start the log – wait for 1 minute – now repeat the action that caused the problem – if it's not too hard, do it more than once – wait for the log to end. Send or share the log file. We will need a description of the problem.

## Using the Legacy Tool – Ruinet

Google “Chipkin ruinet download” with the quote marks

Ruinet -i1.2.3.4 -u0 -lconfig.csv

1. Config - Download config.csv from the current folder on the computer to the gateway.

Ruinet -i1.2.3.4 -u1 -lconfig.csv

2. Config - Transfer config from gateway to computer

Ruinet -i1.2.3.4 -u0 -labc.csv

3. Config - From the local folder on the computer, take the file abc.csv and send it to the gateway as config.csv

Ruinet -i1.2.3.4 -u0 -lfserver.bin

4. Firmware - From the local folder on the computer, take the firmware

Ruinet -i1.2.3.4 -b

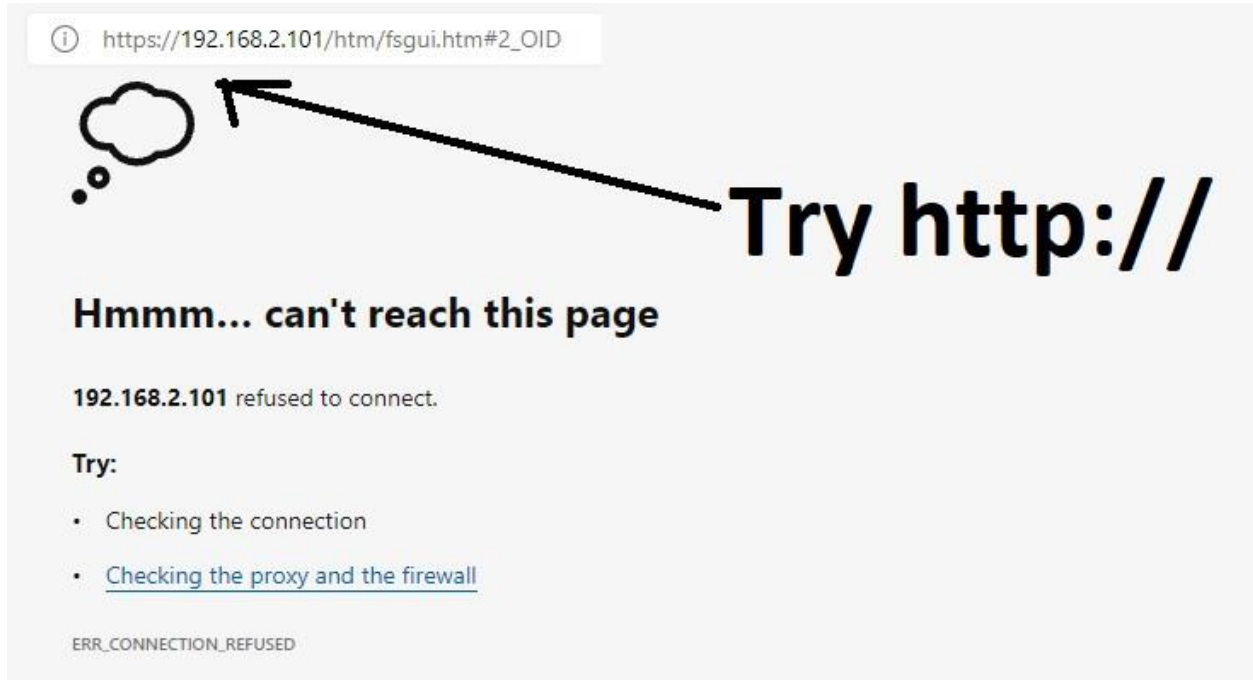
5. Restart the gateway – gives effect to new config or firmware.

You cannot connect to secured

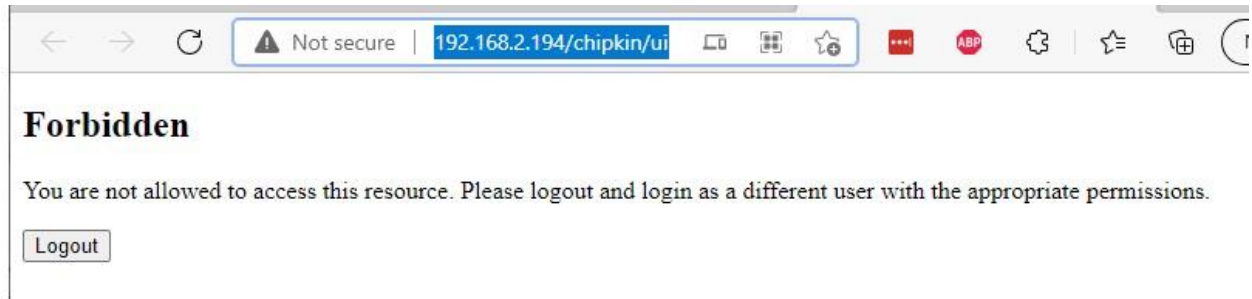
gateways with the legacy tool

## Issues connecting to the gateway web interface

You may be trying to connect with https and the gateway may have been setup as simple http



If you see this



Then try this:

