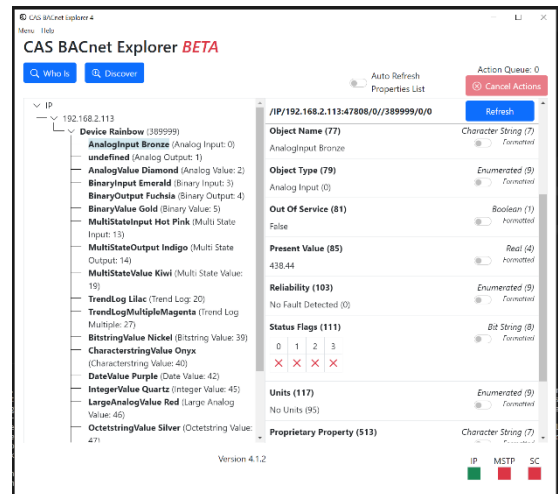




Redeveloped and Redesigned, the New CAS BACnet Explorer is a Must Have!

We have rebuilt the famous CAS BACnet Explorer from the ground up. With new features, improved functionality and a simpler GUI, the new BACnet Explorer is a must have for anyone working with BACnet IP, BACnet MSTP and, soon to come, BACnet SC.

CAS BACnet Explorer 4.0 provides the same functionality as the previous version, in a simpler and more streamlined manner. It is the perfect utility for Discovering, Exploring, Monitoring, Debugging, Testing, and Creating reports of your BACnet® networks and devices. It performs the following functions:



- **Discovery** – Used to find and explore BACnet devices
- **Custom rendering of properties** – The properties of an object are rendered depending on its data type and property identifier.
- **Auto-refresh and data age** – The property list can be automatically refreshed by toggling the “auto-refresh” switch above the property list.
- **Export / import database** – After discovering the devices and objects, the database can be exported to a database file (JSON).
- **Network adapter selection** – Allows the selection of the network adapter to ensure that the traffic is sent out on the correct network.
- **Exploring** – Automatically discovers all the BACnet devices, objects, and their properties on your network in an easy-to-use tree format.
- **Debugging** – With the report function, you can document the current state of all your BACnet® network. Never again ask yourself if a BACnet® device is on your network, and what value it has.
- **Monitoring** – A monitoring table can be set up to check the present value or any other property of a BACnet® object, easily with a single glance.
- **Testing** – The CAS BACnet Explorer allows you to write to the BACnet® points, turn lights on or off, generate alarms, ACK alarms, etc.

Why Did We Redesign the CAS BACnet Explorer? History!

Chipkin originally released the CAS BACnet Explorer v2.00aA in 2002 as a simple tool for discovering BACnet devices and objects on a network and validating the present values. It has been updated many times since its initial release with new features requested by our customers. CAS BACnet Explorer was last updated in 2012 with version v2.02aW as it satisfied most of our customers' needs.

A lot has changed in BACnet spec since 2012. COV, BBMD, Network port objects, Elevator objects. One of the most exciting changes has been the introduction of BACnet SC (Secure Connect) in ANNEX AB. BACnet SC uses web sockets to add TLS encryption and security, in a hub and spoke configuration.

Chipkin updated the CAS BACnet Stack to support BACnet SC data link protocol. This allows companies to embed the CAS BACnet Stack into their product and expose their data with a BACnet interface. The CAS BACnet Stack supports BACnet IP, BACnet MSTP, BACnet Ethernet, and BACnet SC data link protocols.

With the addition of BACnet SC, Chipkin needed a tool to help their customers discover and validate BACnet SC devices. We also wanted to improve the adoption of BACnet SC in the industry. Thus, we decided to update the CAS BACnet Explorer.

Thank you once again for your help testing the latest version of the CAS BACnet Explorer.

Features

- The CAS BACnet Explorer supports the following features:
 - Supported BACnet networks
 - BACnet@/IP
 - BACnet@/SC (Secure Connect)
 - BACnet@/MSTP (Master/Slave/Token Passing)
- Supports Windows 7 or later, and Ubuntu 18.04 or later
- Discovery of BACnet devices
- Custom rendering of BACnet properties
- Generation of reports for offline documentation
- Auto-refresh and monitoring
- Supports BACnet protocol revision 20+
- Supports BACnet commands
 - Who-Is
 - Who-Has
 - Time-Synchronization
 - Device Communication Control
 - Read-Property
 - Read-Property-Multiple
 - Write-Property
 - Write-Property-Multiple
 - Subscribe-COV
 - Cancel-Subscribe-COV
 - Create-Object
 - Delete-Object
 - Read-Range
 - Confirmed-Text-Message
 - Unconfirmed-Text-Message
 - Register-Foreign-Device