

Z77 Series Conventional Detector Base

Features

- Built in alarm LED indicator
- Scratch-resistant high-impact plastic housing
- Optional Dummy Plug for protection during installation
- U.L. Listed
- Allows interchangeable detector heads



Detector Base Shown with R7 Detector

Description

The Z77 series of detector bases accommodates the R7 and F7 Smoke Detectors as well as the D9 Thermal Detector. They contain the electronics required for use on a conventional initiating line of a U.L. listed Control Panel and conventional zone interface (CZI) devices. The series consists of the standard model Z77B (30780-01), Z77F (30780-04) with flashing LED, and Z77FR (30780-05) with relay, flashing LED and remote LED capabilities.

A remote LED option on a single gang plate and an Optional Audible Device are available. The detector head can be assembled to the compatible detector base in a twist lock configuration. This facilitates ease of installation, testing and maintenance. The detector head protrudes from the base to allow easy

entry of smoke from any direction.

Operation

Normal Quiescent Condition

Z77B (30780-01) - In normal quiescent mode there are no audible or visual trouble indicators.

On the Z77F (30780-04) and Z77FR (30780-05) models, the red LED will flash approximately every six seconds, indicating the device is active.

Alarm Condition

Whenever a detector is in the alarm condition, the associated base will sense that condition and will indicate an alarm response to the initiating circuit module, resulting in an alarm indication at the Control Panel. The detector base LED will now light steady to indicate an alarm condition.

The alarm status is maintained until

the detector is reset by a momentary power interrupt from the Control Panel.

Trouble Condition

Removal of the detector from its base or an opening in the initiating zone circuit will indicate a trouble condition on the associated circuit module.

Installation

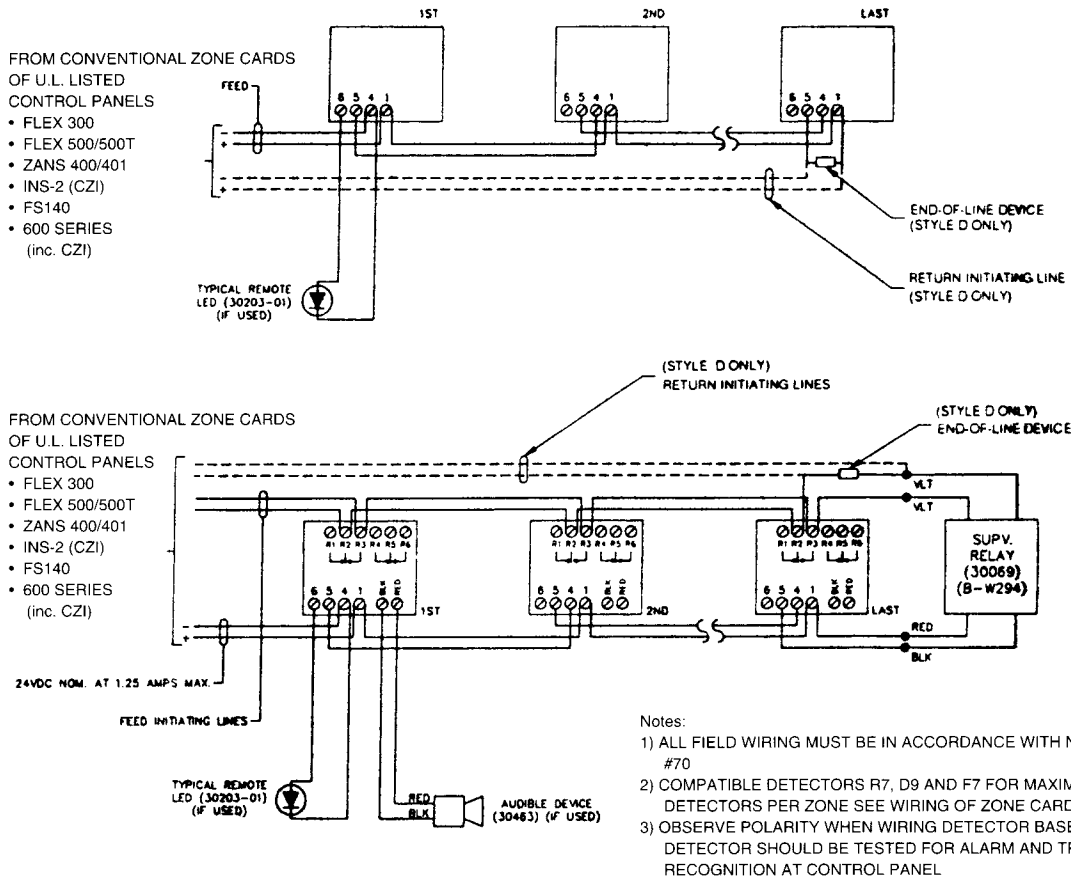
For maintenance purposes the installed base must be easily accessible. Ensure that it will be possible to test or extract the detector from a point directly below the base.

Mount the base in a position which allows visibility of the built-in response indicating LED to ensure quick location of the detector in alarm.

Ordering Information

Supplied	Quantity	Model	Part Number	Description
<input type="checkbox"/>	___		30780-01	Standard Base, Z77B
<input type="checkbox"/>	___		30780-04	Standard Base with Pulsing LED, Z77F
<input type="checkbox"/>	___		30780-05	Base with Pulsing LED and Auxiliary Relay, Z77FR
<input type="checkbox"/>	___		30463	Optional Audible Alarm Indicator for Z77FR only
<input type="checkbox"/>	___		30461	Locking Tabs for Z77 Bases (Package of 50)
<input type="checkbox"/>	___		69079	Jump Plug
<input type="checkbox"/>	___		30203-01	Remote Alarm LED on Single Gang Plate (2 volts)
<input type="checkbox"/>	___		30069	E.O.L Supervisory Relay

Wiring Diagram



Specifications and wiring information are provided for information only and are believed to be accurate. However, Gamewell assumes no responsibility for their use. Specifications are subject to change without notice; installation and wiring instructions shipped with the product should always be used for actual installation.