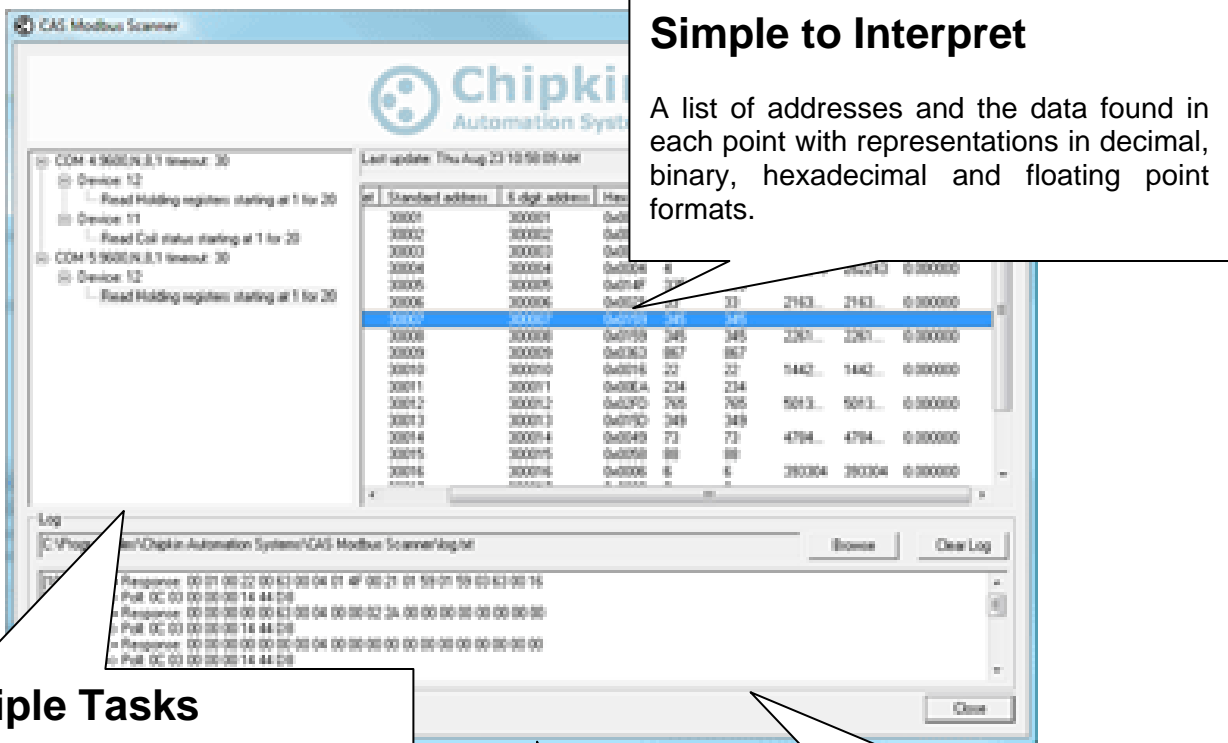


# CAS Modbus Scanner

- Read data from Modbus Devices using the Modbus RTU serial protocol on RS232 or RS485 networks.
- Simple, easy and free without limitations or the irritation of expiring licenses or short lived demo modes like some other packages.



**Simple to Interpret**  
A list of addresses and the data found in each point with representations in decimal, binary, hexadecimal and floating point formats.

**Multiple Tasks**  
Configure multiple connections, multiple devices and multiple tasks for each device.

**Message Log**  
Each message and response is displayed and captured to the log as well as informational messages. Use the log to review site work when you return to the office.

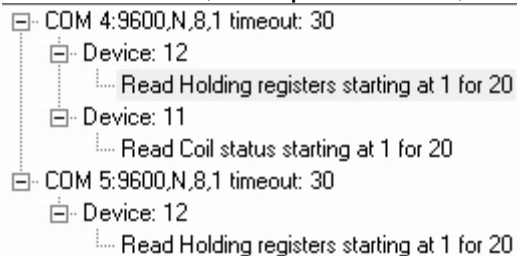
**Free Download**  
<http://www.chipkin.com/a/products/modbus/>

## CAS Modbus Scanner - Features

- Can read; coil status (0xxxx), input status(2xxxx), input registers (3xxxx), and holding registers (4xxxx)
- Data is viewable in Binary, HEX, Uint16, Int16, Uint32, Int32, and Float32

6 digit address	Hex	uint16	int16	uint32	int32	float32
300001	0x0013	19	19			
300002	0x0021	33	33	2162707	2162707	0.00000
300003	0x002C	44	44			
300004	0x0040	64	64	4194348	4194348	0.00000
300005	0x0058	88	88			

- Multiple connections , Multiple Devices, Multiple Tasks



- Works with RS232 and RS485
- Auto / Manual Refresh
- Message and operational logs saved to file for later review.

```

[13:44:52] => Poll: 0C 03 00 00 00 14 44 D8
[13:44:28] <= Response: 00 13 00 21 00 2C 00 40 00 58 00 42 00 00 0D 89 00 16 00 0D
  
```

## CAS Modbus Scanner - Benefits

- Free – No nonsense – No Nuisance  
Anonymous Download and install. No registration or email address required  
No expiry, no restarts , no limitations on how long you use it for. No 2 minute expiry like ModScan
- Simple but effective

## CAS Modbus Scanner - Requirements

- Windows: XP / 2000
- 10 MB of free hard drive space
- One free serial port